
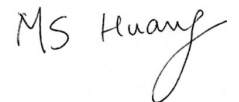


EXAMINED BY : 	EMERGING DISPLAY TECHNOLOGIES CORPORATION	FILE NO . CAS-10210
APPROVED BY : 		ISSUE : OCT.23,2003
		TOTAL PAGE : 10
		VERSION : 2

CUSTOMER	ACCEPTANCE	SPECIFICATIONS
----------	------------	----------------

MODEL NO. :

32F50(LED TYPES)

FOR MESSRS :

CUSTOMER'S APPROVAL

DATE :

BY :

EMERGING DISPLAY
TECHNOLOGIES CORPORATION

MODEL NO . 32F50(LED TYPES)	VERSION 2
--------------------------------	--------------

RECORDS OF REVISION	DOC . FIRST ISSUE APR.05,2000
---------------------	----------------------------------

DATE	REVISED PAGE NO.	SUMMARY
OCT.23,2003	1	2. MECHANICAL SPECIFICATIONS (4)ACTIVE AREA ---- 95.97W*71.97H → (4)ACTIVE AREA ---- 95.98W*71.98H (5)DOT SIZE ---- 0.27W*0.27H → (5)DOT SIZE ---- 0.28W*0.28H
	6	6. OPTICAL CHARACTERISTICS ITEM : VIEWING AREA → VIEWING ANGLE
	7	7. OUTLINE DIMENSIONS AA. 95.97 → 95.98 , 71.97 → 71.98
	9	9. DETAIL DRAWING OF DOT MATRIX REVISED THE ENTIRE PAGE

TABLE OF CONTENTS

NO.	ITEM	PAGE
1.	GENERAL SPECIFICATIONS -----	1
2.	MECHANICAL SPECIFICATIONS -----	1
3.	ABSOLUTE MAXIMUM RATINGS -----	2
4.	ELECTRICAL CHARACTERISTICS -----	3
5.	TIMING CHARACTERISTICS -----	4~5
6.	OPTICAL CHARACTERISTICS -----	6
7.	OUTLINE DIMENSIONS -----	7
8.	BLOCK DIAGRAM -----	8
9.	DETAIL DRAWING OF DOT MATRIX -----	9
10.	INTERFACE SIGNALS -----	9
11.	POWER SUPPLY -----	10

NUMBERING SYSTEM

Polarizer Mode	Backlight	Code value
Transflective	LED	L

E	W	32	F	50	G	L	Y
---	---	----	---	----	---	---	---

LCD type + color	Code Value
STN + Yellow-Green	Y
STN + Gray	G
FSTN + White	F

Backlight	Code value
Yellow-Green	Y

1. GENERAL SPECIFICATIONS

1.1 GENERAL SPECIFICATIONS
PLEASE REFER TO :

CUSTOMER ACCEPTANCE STANDARD SPECIFICATIONS :

E U - 0 0 1 A

1.2 THIS INDIVIDUAL SPECIFICATION IS PRIOR TO GENERAL
SPECIFICATIONS .

2. MECHANICAL SPECIFICATIONS

- (1) NUMBER OF DOTS ----- 320W * 240H DOTS
- (2) MODULE SIZE ----- 134.5W * 117.0H * 14.0D(max.)mm
- (3) EFFECTIVE AREA ----- 103.0W * 79.0H mm
- (4) ACTIVE AREA ----- 95.98W * 71.98H mm
- (5) DOT SIZE ----- 0.28W * 0.28H mm
- (6) DOT PITCH ----- 0.3W * 0.3H mm
- (7) LCD TYPE *
- (8) DRIVING METHOD ----- 1 / 240 DUTY MULTIPLEX DRIVE
- (9) BACKLIGHT ----- LED , COLOR : YELLOW-GREEN
- (10) TEMPERATURE COMPENSATION CIRCUIT IS BUILT IN

* PLEASE REFER TO NUMBERING SYSTEM .

3. ABSOLUTE MAXIMUM RATINGS

3.1 ELECTRICAL ABSOLUTE MAXIMUM RATINGS.

PARAMETER	SYMBOL	MIN.	MAX.	UNIT	REMARK
POWER SUPPLY FOR LOGIC	VDD - VSS	0	7.0	V	
POWER SUPPLY FOR LCD DRIVING	VDD - VEE	0	3.5	V	
INPUT VOLTAGE	VI	VSS	VDD	V	
STATIC ELECTRICITY	—	—	100	V	NOTE (1)
LED POWER VOLTAGE	VLED	—	2.7	V	
LED FORWARD CURRENT	IF	—	80	mA	

NOTE (1) : TEST METHOD AND CONDITIONS :
AFTER CHARGING UP 200 PF CAPACITOR BY STATED VOLTAGE ,
THE CAPACITOR IS CONNECTED WITH INTERFACE PINS OF THE
MODULE .

3.2 ENVIRONMENTAL ABSOLUTE MAXIMUM RATINGS.

I T E M	OPERATING		STORAGE		REMARK
	MIN.	MAX.	MIN.	MAX.	
AMBIENT TEMPERATURE	-20 °C	70 °C	-30 °C	80 °C	NOTE (2), (3)
HUMIDITY	—	90 % RH	—	90 % RH	WITHOUT CONDENSATION
VIBRATION	—	2.45 m/s ² (0.25 G)	—	11.76 m/s ² (1.2 G)	10 ~ 100 HZ XYZ DIRECTIONS 1 Hr. EACH
SHOCK	—	29.4 m/s ² (3 G)	—	490.0 m/s ² (50 G)	10 mSECONDS XYZ DIRECTIONS 1 TIME EACH
CORROSIVE GAS	NOT ACCEPTABLE		NOT ACCEPTABLE		

NOTE (2) : Ta AT -30°C : 48HR MAX.
80°C : 168HR MAX.

NOTE (3) : BACKGROUND COLOR CHANGES SLIGHTLY DEPENDING ON AMBIENT
TEMPERATURE THIS PHENOMENON IS REVERSIBLE .

4. ELECTRICAL CHARACTERISTICS

Ta = 25 °C

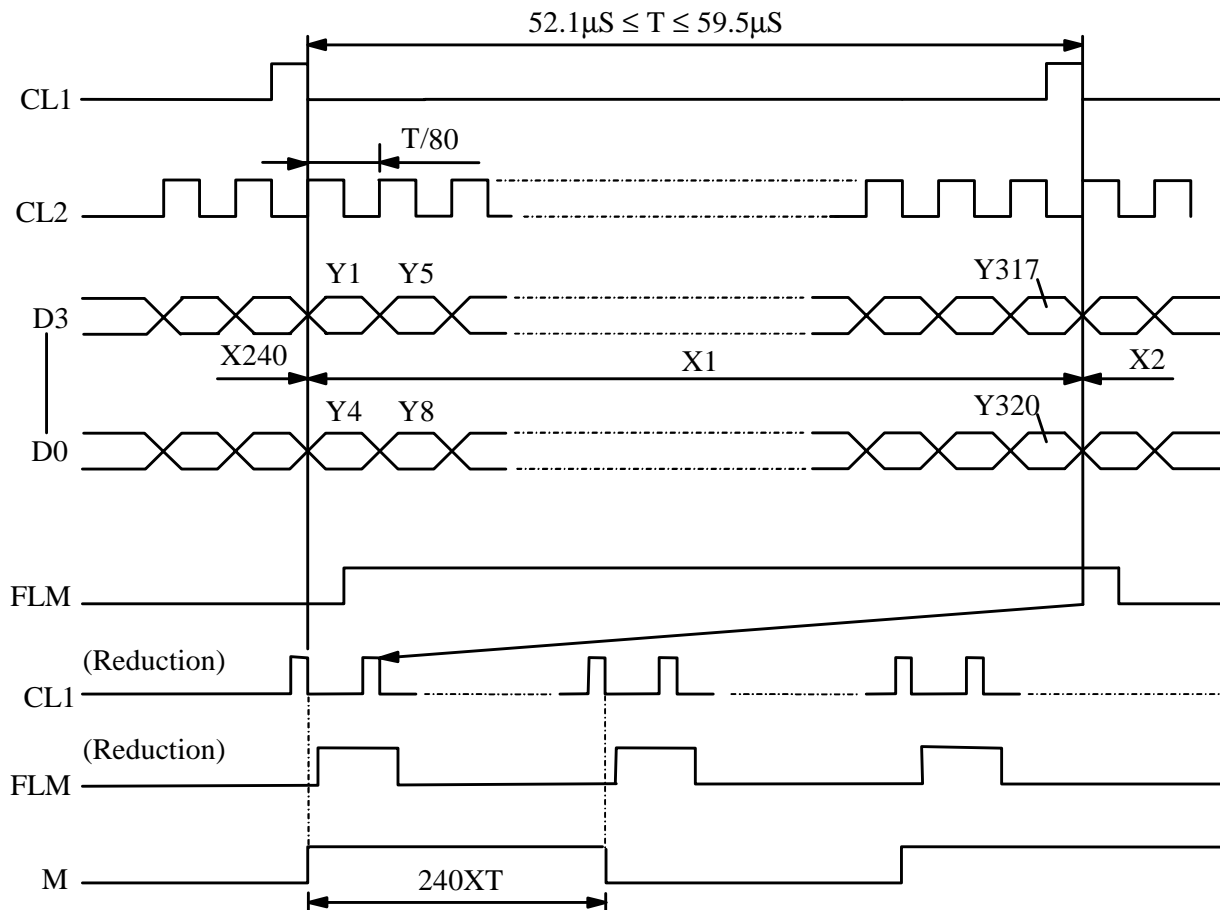
VDD = 5.0 V

PARAMETER	SYMBOL	CONDITION	MIN .	TYP .	MAX .	UNIT
POWER SUPPLY VOLTAGE FOR LOGIC	VDD - VSS	—	4.5	5.0	5.5	V
POWER SUPPLY VOLTAGE FOR LCD DRIVE	VEE - VSS	—	-26.5	-27.0	-27.5	V
INPUT VOLTAGE NOTE (1)	VIH	H LEVEL	0.8*VDD	—	—	V
	VIL	L LEVEL	—	—	0.2*VDD	V
POWER SUPPLY CURRENT FOR LOGIC	IDD	VDD - VSS = 5.0 V VEE - VSS = -27.0	—	4	8	mA
POWER SUPPLY CURRENT FOR LCD DRIVE	IEE	VDD - VSS = 5.0 V VEE - VSS = -27.0	—	5	10	mA
RECOMMENDED LCD DRIVING VOLTAGE NOTE (2)	VDD - VLCD ∅ = 10° θ = 0°	Ta = -20 °C	—	24.3	—	V
		Ta = 25 °C	—	20.0	—	V
		Ta = 70 °C	—	15.8	—	V
	VDD - VO	Ta = 25 °C	—	14	—	V
FLM FREQUENCY	f FLM	—	70	75	80	HZ
POWER SUPPLY FOR LED	VLED	—	21	24	27	V
	ILED	VLED = 24V	—	40	50	mA

NOTE (1): APPLIED TO TERMINALS M, FLM, CL1, CL2, D0 ~ D3, DISPOFF .

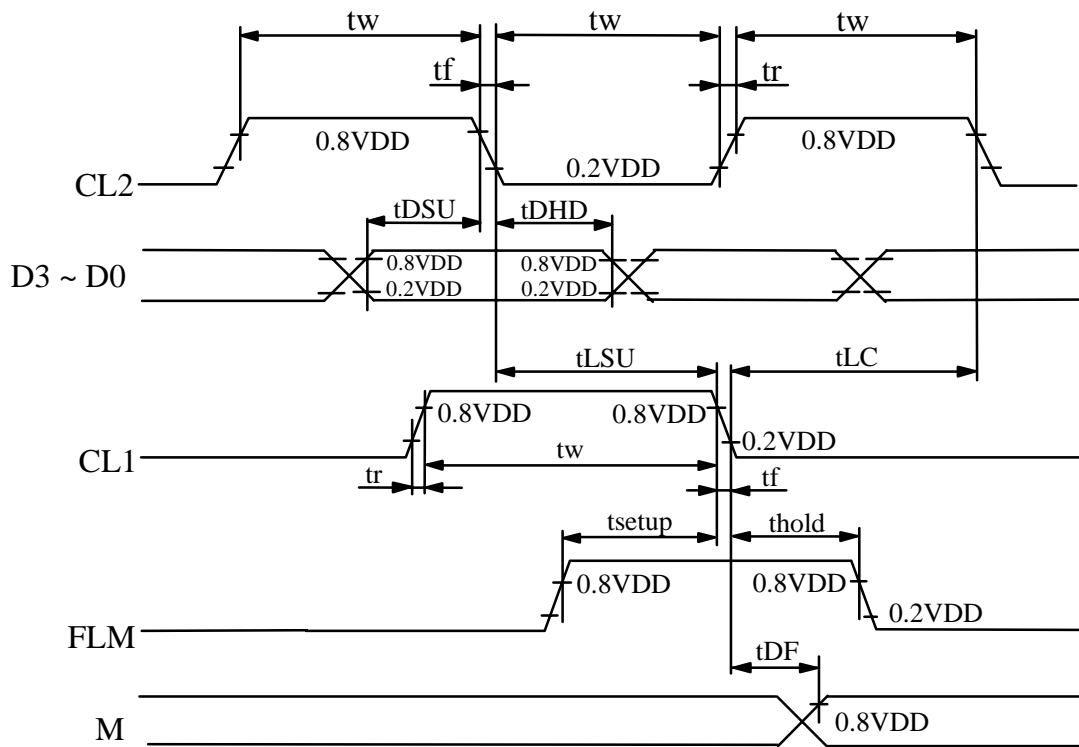
NOTE (2): RECOMMENDED LCD DRIVING VOLTAGE MAY FLUCTUATE ABOUT ± 1.0V BY EACH MODULE .

5. TIMING CHARACTERISTICS
5.1 INTERFACE TIMING



5.2 SWITCHING CHARACTERISTICS

PARAMETER	SYMBOL	MIN.	TYP.	MAX.	UNIT
Frequency of maximum clock	fcp	—	—	8	MHZ
CL1 , CL2 , pulse width	tw	45	—	—	ns
Rise , fall time	tr,tf	—	—	15	ns
Data setup time	tDSU	20	—	—	ns
Data hold time	tDHD	20	—	—	ns
CL1 setup time	tLSU	80	—	—	ns
CL1 → CL2 time	tLC	80	—	—	ns
FLM setup time	tsetup	100	—	—	ns
FLM hold time	t hold	100	—	—	ns
M delay time	tDF	—	—	300	ns



6. OPTICAL CHARACTERISTICS

Ta = 25 °C

VDD = 5.0 V

VDD-VLCD = (22.7V)

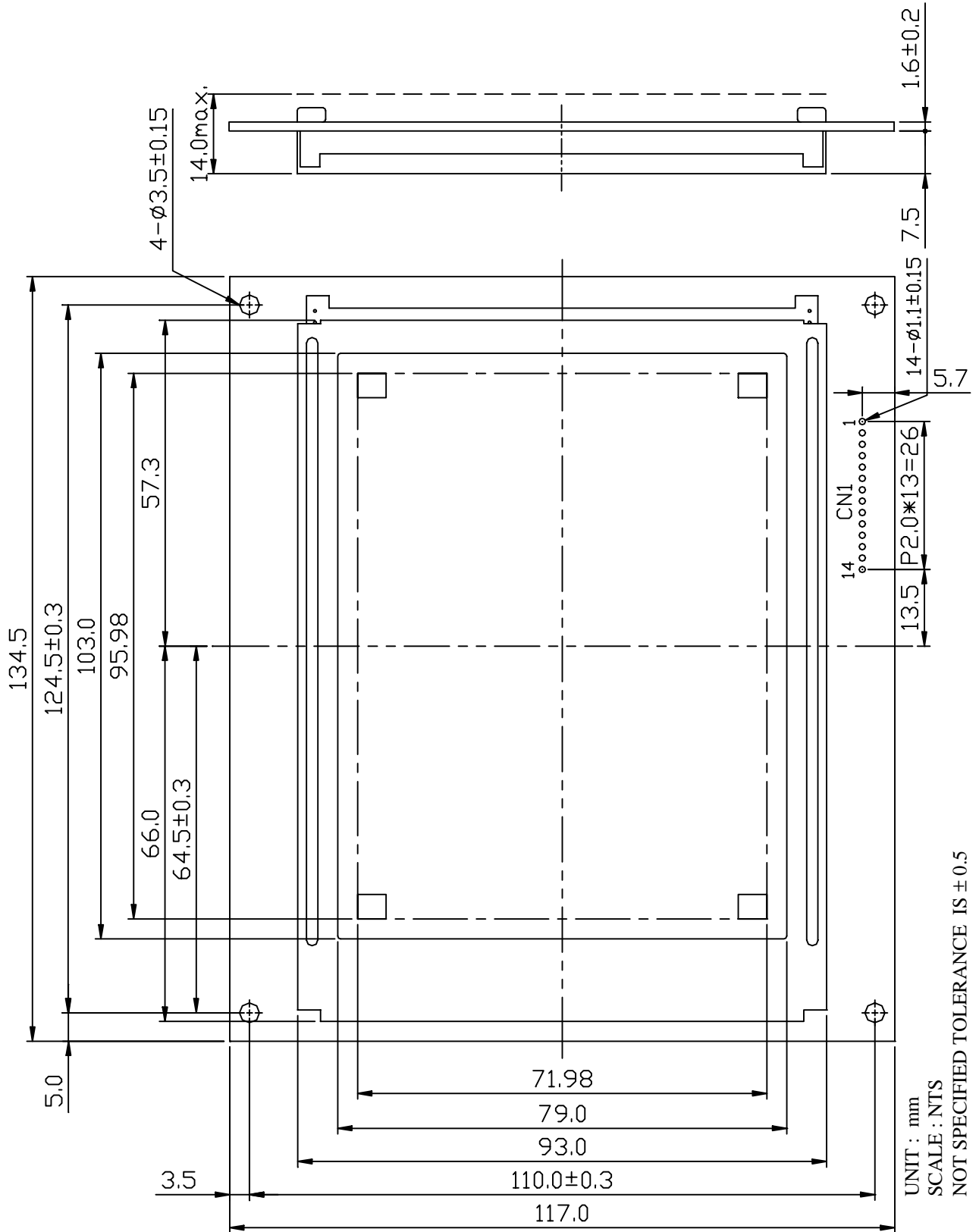
I T E M		SYMBOL	CONDITION	MIN.	TYP.	MAX.	UNIT	NOTE
VIEWING ANGLE	STN	∅ 2 - ∅ 1	K ≥ 2.0	—	40	—	deg.	1
	FSTN			—	50	—	deg.	1
CONTRAST RATIO	STN	K	∅ = 10° θ = 0°	—	10	—	—	1
	FSTN			—	20	—	—	1
RESPONSE TIME	tr (rise)	∅=10° θ = 0°	Ta = - 20 °C	—	6268	—	ms	1
			Ta = 25 °C	—	228	—		
			Ta = 70 °C	—	104	—		
	tf (fall)		Ta = - 20 °C	—	5714	—		
			Ta = 25 °C	—	191	—		
			Ta = 70 °C	—	86	—		
BRIGHTNESS OF BACKLIGHT		B	—	—	3.5	—	cd / m ²	—

NOTE (1) : PLEASE REFER TO :
CUSTOMER ACCEPTANCE STANDARD SPECIFICATIONS.

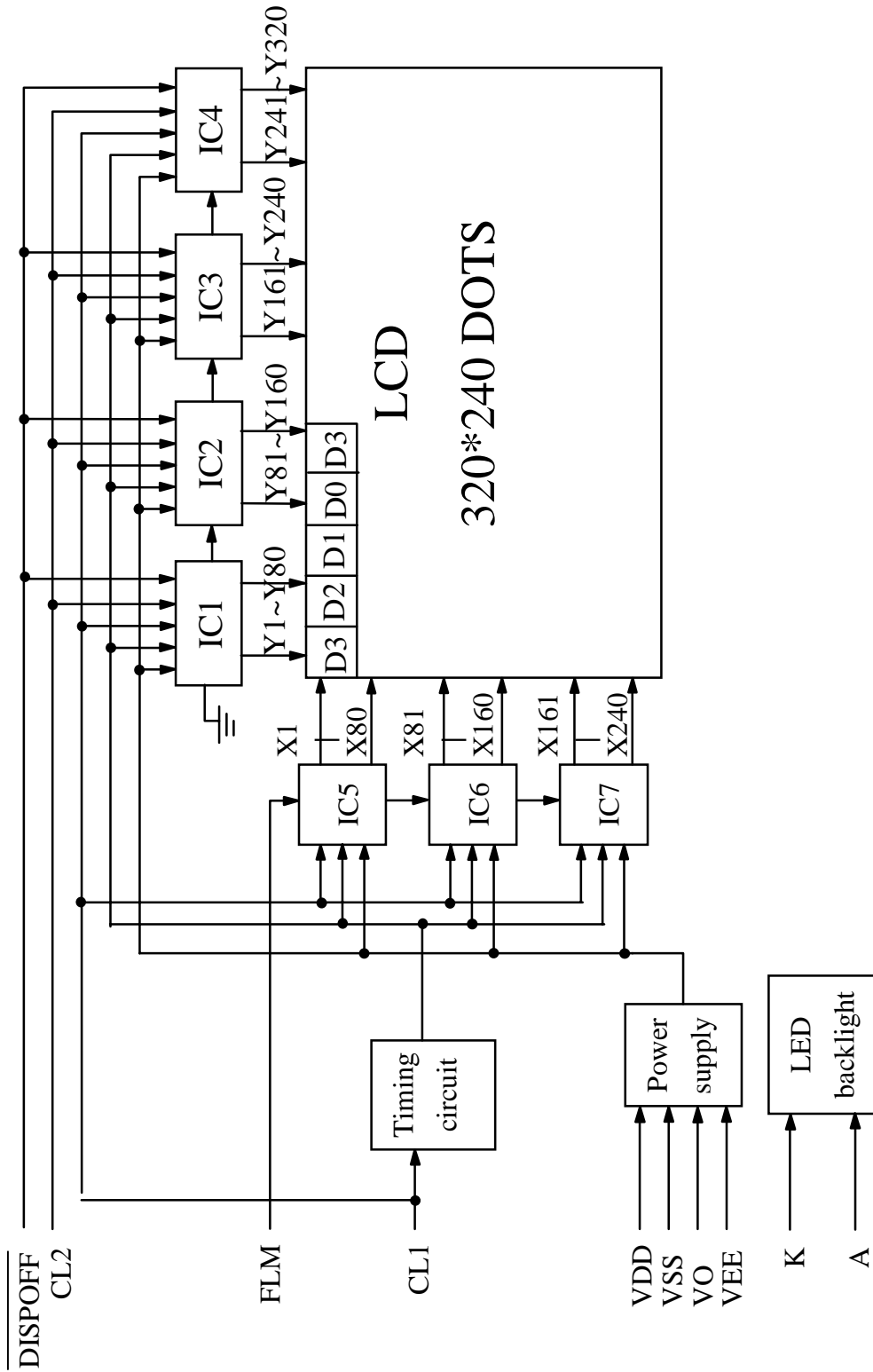
EU - 001 A

MODEL NO . 32F50(LED TYPES)	VERSION 2	PAGE 7
--------------------------------	--------------	-----------

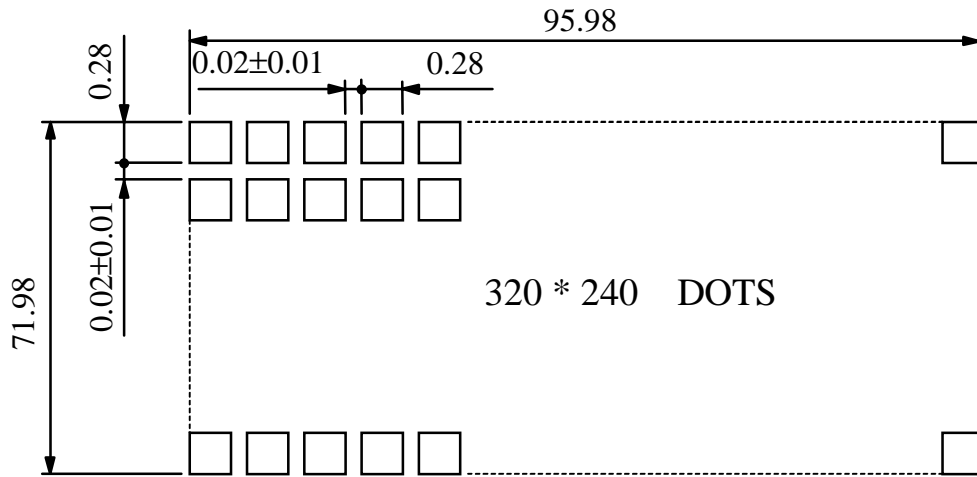
7. OUTLINE DIMENSIONS



8. BLOCK DIAGRAM



9. DETAIL DRAWING OF DOT MATRIX



320 * 240 DOTS

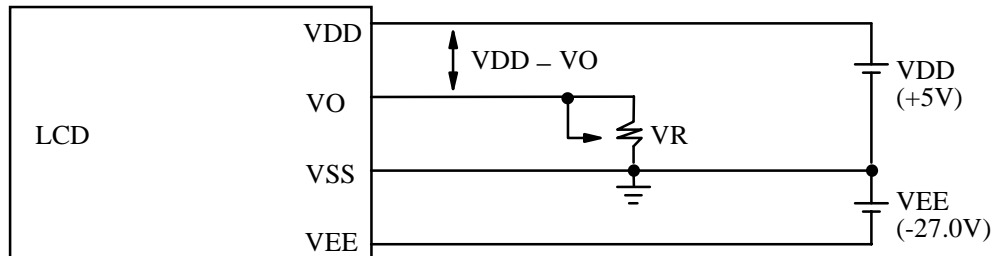
UNIT : mm
SCALE : NTS
NOT SPECIFIED TOLERANCE IS ± 0.1

10. INTERFACE SIGNALS

PIN NO	SYMBOL	LEVEL	FUNCTION
1	VO	—	OPERATING VOLTAGE FOR LCD DRIVING
2	VEE	—	POWER SUPPLY FOR LCD DRIVING (-27V)
3	D3	H / L	DISPLAY DATA
4	D2	H / L	
5	D1	H / L	
6	D0	H / L	
7	VSS	—	GROUND
8	VDD	—	POWER SUPPLY FOR LOGIC CIRCUIT
9	CL2	H → L	DISPLAY DATA SHIFT
10	CL1	H → L	DISPLAY DATA LATCH
11	FLM	H	THE FLM SIGNAL INDICATING THE BEGINNING OF EACH DISPLAY CYCLE
12	K	—	POWER SUPPLY FOR LED BACKLIGHT (GND)
13	A	—	POWER SUPPLY FOR LED BACKLIGHT (+24V)
14	NC	—	NO CONNECTION

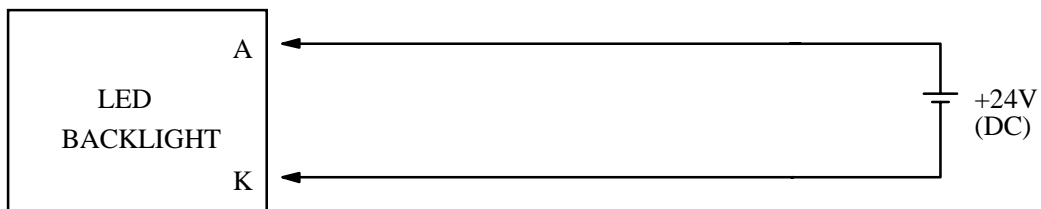
1 1 . POWER SUPPLY

1 1 . 1 POWER SUPPLY FOR LCM



VDD - VO : LCD DRIVING VOLTAGE
VR : 30KΩ ~ 50KΩ

1 1 . 2 POWER SUPPLY FOR LED BACK - LIGHT



1 1 . 3 TIMING OF POWER SUPPLY AND INTERFACE SIGNAL

