



220 Huff Ave, Suite 400
Greensburg, PA 15601



PH: (724) 552-4904
F: (724) 552-4905



sales@agdisplays.com
agdisplays.com



Advanced LCD Solutions Specialist

DIGITAL SIGNAGE



**STAND ALONE SIGNAGE
OUTDOOR SIGNAGE
DIGITAL SIGNAGE**

About Us



For over a decade AGDisplays has been a leading provider of high quality LCD enhancement products and services for the industrial markets. We lead the way in offering an extensive range of custom panel solutions that improve standard display attributes while maximizing performance in any environment. The AGDisplays teams are experts in LCDs, from building simple or complex designs to integration work including ruggedization.

In our 124,000 sq. foot facility, we offer over 800 off the shelf products that include tablets, open and closed frame LCDs and much more. Our knowledge in innovative LCD technology and our high-quality control standards separate us from the rest. At AGDisplays, our teams have a true commitment to becoming your trusted partner.



OUR SERVICES

- Off The Shelf LCD Products
- NVIS Integration and Design
- OCA, Optical & Bonding Services
- Custom LED Integration & Design
- Touch Screen Integration & Design
- Custom Glass Supply Services
- Turnkey & Design Services
- EMI Shielding & Design

- Film Enhancements & Repolarization
- Certificated FAA Part 145 Repair Station
- Component Assembly & Integration
- LCD Controller, Cabling & Design
- Testing/Certification of EOL Panels
- Drop-in Replacement
- Industrial Repair Program
- Zero Dead Pixel Inspection

Industries Served



MILITARY



AVIONICS



HOTEL



MARINE



MARKETING



MEDICAL



RESTAURANT



RETAIL



TRANSPORTATION



Applications



- ADVERTISEMENT**
- BANK QUEUES**
- BUILDING DIRECTORIES**
- CORPORATE MESSAGES**
- FOOD MARKETING**
- HEALTH AND SAFETY**
- IN STORE DIGITAL SIGNS**
- INTERPRETIVE SIGNAGE**
- INTERACTIVE MENUS**
- LOCATION INFORMATION**
- PRODUCT PRICING**
- PUBLIC INFORMATION**
- TRAVELER INFORMATION**

Featured Digital Signage



AG315HV-CF04N-NNU-V1

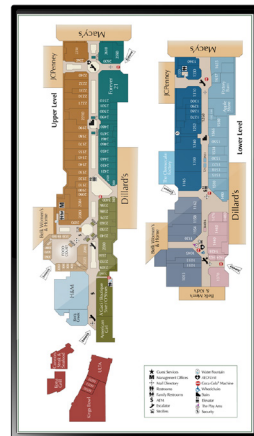
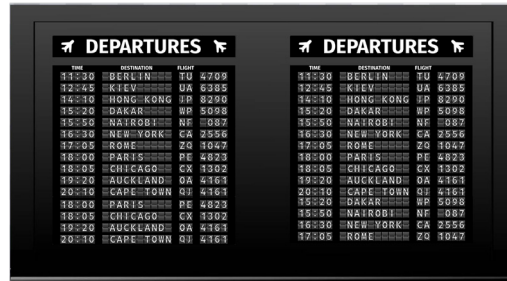
Panel	31.55" LED backlit	Play Time Control	Support
Active Area	698.4 (H) x 392.9 (V) mm	Content Input Method	USB, LAN, WAN
Aspect Ratio	16:9	Product Size (mm)	723.4 (H) x 422.9 (V) x 56.8 (D)
Resolution	1920x1080	Bezel (mm)	U: 10 mm; D: 15 mm; L: 10 mm; R: 10 mm
Brightness	400 nits	Weight	Net: 8KG Cross: 10KG
Contrast Ratio	5000:1	Power	40W
Viewing Angle	178°	Speaker	2*2W, 4 Ω
Display Colors	16.7M	VESA	200x200 mm
Life Expectance	60,000 hours	Mount	Landscape, portrait
Interface	RJ45*1, USB*2, HDMI*1, VGA*1, Audio*1, TF socket, SIM card socket	Power Supply	AC100-240V (50/60 HZ)
Video Format	Avi, mp4, ts, trp, mkv, mov, mpg, dat, vob	Working Temp	0-40°C
Audio Format	Mp3, wma, m4a, aac	Working Humidity	10%-80%
Picture and Text	Bmp, jpg, jpeg, png, txt	Certificates	CCC, FCC
Screen Mode	Landscape, portrait, full screen, divided screen		

NOTE: specifications subject to change without notice.

Digital Signage



Part Number	Size	Resolution	Brightness	Contrast Ratio	Viewing Angle
AG215HV-CF02N-NUU-V1	22"	1920x1080	250 nits	1000:1	178°/178°
AG315HV-CF04N-NUU-V1	32"	1920x1080	400 nits	5000:1	178°/178°
AG315HV-CF04N-NUU-VA	32"	1920x1080	400 nits	5000:1	178°/178°
AG425HV-CF04N-NUU-V3	43"	1920x1080	450 nits	5000:1	178°/178°
AG425HV-CF04N-NUU-V2	43"	1920x1080	450 nits	5000:1	178°/178°
AG425HV-CF04N-NUU-VA	43"	1920x1080	450 nits	5000:1	178°/178°
AG485HV-CF04N-NUU-V2	49"	1920x1080	450 nits	5000:1	178°/178°
AG485HV-CF04N-NUU-V1	49"	1920x1080	450 nits	5000:1	178°/178°
AG485HV-CF04N-NUU-VB	49"	1920x1080	450 nits	5000:1	178°/178°
AG550HV-CF04N-NUU-V1	55"	1920x1080	450 nits	5000:1	178°/178°
AG546HV-CF04N-NUU-V2	55"	1920x1080	450 nits	5000:1	178°/178°
AG546HV-CF04N-NUU-VB	55"	1920x1080	450 nits	5000:1	178°/178°



NOTE: specifications subject to change without notice.

Outdoor Digital Signage



**BANKING SERVICES
CAMPUS EVENTS/ACTIVITIES
DIGITAL BILLBOARDS
HOTELS/NEARBY ATTRACTIONS
PUBLIC ADVERTISEMENTS
PUBLIC TRANSPORTATION
QUICK SERVICE RESTAURANTS
REAL ESTATE VIRTUAL TOURS
RETAIL PROMOTIONS
STADIUM PROGRAMMING
TRAVELER INFORMATION**

NOTE: specifications subject to change without notice.

Featured Outdoor Signage



AG550HM-OS15N-ITU-W2 / AG550HM-OS15N-ITU-A2

Panel	Samsung/LG Grade A+ Panel
Size	55"
Sizes Available	42", 46", 55", 65", 70"
Display Size	1209 (H) x 680 mm (V)
Display Ratio	16:9
Resolution	1080x1920
Viewing Angle	178°/178°
Color	16.7M
Backlight	LED
Brightness	1500 nits
Contrast	5000:1
Power	140W
Voltage	AC100-240V 50/60HZ
Power Stability	Good

Application	Outdoor
Operating Temp	-5° to 75°C
Touchscreen	Infrared touch (touch foil, capacitive)
Touch Ways	finger, touch pen
Touch Durability	50 million + touches
OS Systems	Windows 7 or Android 4.2 (or upgrade)
Network Connection	RJ45, 3G, WIFI (optional)
Interface (PC/Android)	VGA, HDMI, USB / HDMI, USB, SD
Material	Aluminum alloy, tempered glass
Surface	Sprayed, frosted aluminum
Shell	Galvanized steel sheet; thickness 1.0-1.5 mm
Color	Black, white, silver or custom
Certifications	CE/CCC/FCC/ROHS/ISO9001

NOTE: specifications subject to change without notice.

Outdoor Digital Signage

|||||

Part Number	Size	Resolution	Brightness	Contrast Ratio	Interface
AG220HM-OS15N-ITU-W1	22"	1080x1920	1500 nits	5000:1	VGA/HDMI/USB
AG220HM-OS15N-ITS-A1	22"	1080x1920	1500 nits	5000:1	HDMI/USB/SD
AG260HM-OS15N-ITU-W1	26"	1366x768	1500 nits	5000:1	VGA/HDMI/USB
AG260HM-OS15N-ITU-A2	26"	1366x768	1500 nits	5000:1	HDMI/USB/SD
AG320HM-OS15N-ITU-W1	32"	1080x1920	1500 nits	5000:1	VGA/HDMI/USB
AG320HM-OS15N-ITU-A1	32"	1080x1920	1500 nits	5000:1	HDMI/USB/SD
AG420HM-OS15N-ITU-W1	42"	1080x1920	1500 nits	5000:1	VGA/HDMI/USB
AG420HM-OS15N-ITU-A1	42"	1080x1920	1500 nits	5000:1	HDMI/USB/SD
AG420HM-OS15N-ITU-W2	42"	1080x1920	1500 nits	5000:1	VGA/HDMI/USB
AG420HM-OS15N-ITU-A2	42"	1080x1920	1500 nits	5000:1	HDMI/USB/SD
AG420HM-OS15N-ITU-W3	42"	1080x1920	1500 nits	5000:1	VGA/HDMI/USB
AG420HM-OS15N-ITU-A3	42"	1080x1920	1500 nits	5000:1	HDMI/USB/SD
AG420HM-OS15N-ITU-W4	42"	1080x1920	1500 nits	5000:1	VGA/HDMI/USB
AG420HM-OS15N-ITU-A4	42"	1080x1920	1500 nits	5000:1	HDMI/USB/SD
AG420HM-OS15N-ITU-W5	42"	1080x1920	1500 nits	5000:1	VGA/HDMI/USB
AG420HM-OS15N-ITU-A5	42"	1080x1920	1500 nits	5000:1	HDMI/USB/SD
AG420HM-OS15N-ITU-W6	42"	1080x1920	1000 nits	5000:1	VGA/HDMI/USB
AG420HM-OS15N-ITU-A6	42"	1080x1920	1000 nits	5000:1	HDMI/USB/SD
AG460HM-OS04N-ITU-W1	46"	1080x1920	450-750 nits	5000:1	VGA/HDMI/USB
AG460HM-OS04N-ITU-A1	46"	1080x1920	450-750 nits	5000:1	HDMI/USB/SD
AG460HM-OS15N-ITU-W2	46"	1080x1920	1500 nits	5000:1	VGA/HDMI/USB
AG460HM-OS15N-ITU-A2	46"	1080x1920	1500 nits	5000:1	HDMI/USB/SD
AG460HM-OS15N-ITU-W3	46"	1080x1920	1500 nits	5000:1	VGA/HDMI/USB
AG460HM-OS15N-ITU-A3	46"	1080x1920	1500 nits	5000:1	HDMI/USB/SD
AG460HM-OS1542-ITU-W4	46"	1080x1920	1500 nits	5000:1	VGA/HDMI/USB
AG460HM-OS1542-ITU-A5	46"	1080x1920	1500 nits	5000:1	HDMI/USB/SD
AG460HM-OS1542-ITU-W6	46"	1080x1920	1500 nits	5000:1	VGA/HDMI/USB
AG460HM-OS1542-ITU-A6	46"	1080x1920	1500 nits	5000:1	HDMI/USB/SD
AG550HM-OS20N-ITU-W1	55"	1080x1920	2000 nits	5000:1	VGA/HDMI/USB
AG550HM-OS20N-ITU-A1	55"	1080x1920	2000 nits	5000:1	HDMI/USB/SD
AG550HM-OS15N-ITU-W1	55"	1080x1920	1500 nits	5000:1	VGA/HDMI/USB
AG550HM-OS15N-ITU-A1	55"	1080x1920	1500 nits	5000:1	HDMI/USB/SD
AG550HM-OS15N-ITU-W2	55"	1080x1920	1500 nits	5000:1	VGA/HDMI/USB

NOTE: specifications subject to change without notice.

Outdoor Digital Signage



Part Number	Size	Resolution	Brightness	Contrast Ratio	Interface
AG550HM-OS15N-ITU-W3	55"	1080x1920	1500 nits	5000:1	VGA/HDMI/USB
AG550HM-OS15N-ITU-A3	55"	1080x1920	1500 nits	5000:1	HDMI/USB/SD
AG550HM-OS15N-ITU-W4	55"	1080x1920	1500 nits	5000:1	VGA/HDMI/USB
AG550HM-OS15N-ITU-A4	55"	1080x1920	1500 nits	5000:1	HDMI/USB/SD
AG550HM-OS15N-ITU-W5	55"	1080x1920	1500 nits	5000:1	VGA/HDMI/USB
AG550HM-OS15N-ITU-A5	55"	1080x1920	1500 nits	5000:1	HDMI/USB/SD
AG550HM-OS15N-ITU-W6	55"	1080x1920	1500 nits	5000:1	VGA/HDMI/USB
AG550HM-OS15N-ITU-A6	55"	1080x1920	1500 nits	5000:1	HDMI/USB/SD
AG650HM-OS15N-ITU-W1	65"	1080x1920	1500 nits	5000:1	VGA/HDMI/USB
AG650HM-OS15N-ITU-A1	65"	1080x1920	1500 nits	5000:1	HDMI/USB/SD
AG840HM-OS15N-ITU-W1	84"	1080x1920	1500 nits	5000:1	VGA/HDMI/USB
AG840HM-OS15N-ITU-A1	84"	1080x1920	1500 nits	5000:1	HDMI/USB/SD



NOTE: specifications subject to change without notice.

Standalone Applications



- AD CAMPAIGNING**
- COMMUNITY ACTIVITIES**
- CORPORATE COMMUNICATION**
- IN STORE PROMOTIONS**
- MALL DIRECTORIES**
- MENU BOARDS**
- NEWS FEEDS & WEATHER**
- PATIENT UPDATES/INFO**
- PUBLIC TRANSPORTATION**
- PUBLIC WARNING SYSTEMS**
- RECREATION CENTER EVENTS**
- SOCIAL MEDIA WALLS**

NOTE: specifications subject to change without notice.

Featured Stand Alone



AG550HM-OS15N-ITU-W2 / AG550HM-OS15N-ITU-A2

Panel	Samsung/LG Grade A+ Panel
Size	42"
Sizes Available	42", 46", 55", 65", 70", 72", 80", 84"
Display Size	930 (H) x 523 (V) mm
Display Ratio	16:9
Resolution	1080x1920
Viewing Angle	178°/178°
Color	16.7M
Backlight	LED
Brightness	450 nits
Contrast	5000:1
Power	140W
Voltage	AC100-240V 50/60HZ
Power Stability	Good

Application	Indoor
Operating Temp	-5°C to 75°C
Touchscreen	Infrared touchscreen (touch foil, capacitive)
Touch Ways	Finger, touch pen
Touch Durability	50 million+ touches
OS Systems	Windows 7 & Android 4.2 (or upgrade)
Network Connection	RJ45, 3G, WIFI (optional)
Interface (PC/Android)	VGA, HDMI, USB / HDMI, USB, SD
Material	Aluminum alloy, tempered glass
Surface	Sprayed, frosted aluminum
Shell	Galvanized steel sheet; thickness: 1-1.5 mm
Color	Black, white, silver or custom
Certifications	CE, FCC

NOTE: specifications subject to change without notice.

Standalone Digital Signage



Part Number	Screen Size	Resolution	Brightness	Contrast Ratio	View Angle
AG220HM-DS04N-ITU-W1	22"	1080x1920	450 nits	5000:1	178°/178°
AG220HM-DS04N-ITU-A1	22"	1080x1920	450 nits	5000:1	178°/178°
AG220TM-DS03N-NUU-V1	22"	1280x1024	350 nits	450:1	178°/178°
AG320HM-DS04N-ITU-W1	32"	1080x1920	450 nits	5000:1	178°/178°
AG320HM-DS04N-ITU-A1	32"	1080x1920	450 nits	5000:1	178°/178°
AG420HM-DS04N-ITU-W1	42"	1080x1920	450 nits	5000:1	178°/178°
AG420HM-DS04N-ITU-A1	42"	1080x1920	450 nits	5000:1	178°/178°
AG420HM-DS04N-ITU-W2	42"	1080x1920	450 nits	5000:1	178°/178°
AG420HM-DS04N-ITU-A2	42"	1080x1920	450 nits	5000:1	178°/178°
AG420HM-DS04N-ITU-W3	42"	1080x1920	450 nits	5000:1	178°/178°
AG420HM-DS04N-ITU-A3	42"	1080x1920	450 nits	5000:1	178°/178°
AG420HM-DS04N-ITU-W4	42"	1080x1920	450 nits	5000:1	178°/178°
AG420HM-DS04N-ITU-A4	42"	1080x1920	450 nits	5000:1	178°/178°
AG420HM-DS04N-ITU-W5	42"	1080x1920	450-750 nits	5000:1	178°/178°
AG420HM-DS04N-ITU-A5	42"	1080x1920	450-750 nits	5000:1	178°/178°
AG420HM-DS04N-ITU-W6	42"	1080x1920	450 nits	5000:1	178°/178°
AG420HM-DS04N-ITU-A6	42"	1080x1920	450 nits	5000:1	178°/178°
AG420HM-DS04N-ITU-W7	42"	1080x1920	450 nits	5000:1	178°/178°
AG420HM-DS04N-ITU-A7	42"	1080x1920	450 nits	5000:1	178°/178°
AG420HM-DS04N-ITU-W8	42"	1080x1920	450 nits	5000:1	178°/178°
AG420HM-DS04N-ITU-A8	42"	1080x1920	450 nits	5000:1	178°/178°
AG420HM-DS04N-ITU-W9	42"	1080x1920	450 nits	5000:1	178°/178°
AG420HM-DS04N-ITU-A9	42"	1080x1920	450 nits	5000:1	178°/178°
AG430HV-CF04N-ITU-V1	43"	1920x1080	450 nits	1100:1	178°/178°
AG460HM-DS04N-ITU-W1	46"	1080x1920	450-750 nits	5000:1	178°/178°
AG460HM-DS04N-ITU-A1	46"	1080x1920	450-750 nits	5000:1	178°/178°
AG460HM-DS04N-ITU-W2	46"	1080x1920	450-750 nits	5000:1	178°/178°
AG460HM-DS04N-ITU-A2	46"	1080x1920	450-750 nits	5000:1	178°/178°
AG460HM-DS04N-ITU-W3	46"	1080x1920	450-750 nits	5000:1	178°/178°
AG460HM-DS04N-ITU-A3	46"	1080x1920	450-750 nits	5000:1	178°/178°
AG460HM-DS04N-ITU-W4	46"	1080x1920	450 nits	5000:1	178°/178°
AG460HM-DS04N-ITU-A4	46"	1080x1920	450 nits	5000:1	178°/178°
AG490HV-CF04N-ITU-V1	49"	1920x1080	450 nits	1100:1	178°/178°
AG550HM-DS04N-ITU-W1	55"	1080x1920	450 nits	5000:1	178°/178°

NOTE: specifications subject to change without notice.

Standalone Digital Signage



Part Number	Screen Size	Resolution	Brightness	Contrast Ratio	View Angle
AG550HM-DS04N-ITU-A1	55"	1080x1920	450 nits	5000:1	178°/178°
AG550HM-DS04N-ITU-W2	55"	1920x1080	450 nits	5000:1	178°/178°
AG550HM-DS04N-ITU-A2	55"	1920x1080	450 nits	5000:1	178°/178°
AG550HM-DS04N-ITU-W3	55"	1920x1080	450 nits	5000:1	178°/178°
AG550HM-DS04N-ITU-A3	55"	1920x1080	450 nits	5000:1	178°/178°
AG550HM-DS04N-ITU-W4	55"	1920x1080	450 nits	5000:1	178°/178°
AG550HM-DS04N-ITU-A4	55"	1920x1080	450 nits	5000:1	178°/178°
AG550HM-DS04N-ITU-W5	55"	1080x1920	450 nits	5000:1	178°/178°
AG550HM-DS04N-ITU-A5	55"	1080x1920	450 nits	5000:1	178°/178°
AG550HM-DS04N-ITU-W6	55"	1080x1920	450 nits	5000:1	178°/178°
AG550HM-DS04N-ITU-A6	55"	1080x1920	450 nits	5000:1	178°/178°
AG550HM-DS04N-ITU-W7	55"	1080x1920	450 nits	5000:1	178°/178°
AG550HM-DS04N-ITU-A7	55"	1080x1920	450 nits	5000:1	178°/178°
AG550HM-DS04N-ITU-W8	55"	1080x1920	450 nits	5000:1	178°/178°
AG550HM-DS04N-ITU-A8	55"	1080x1920	450 nits	5000:1	178°/178°
AG550HV-CF04N-ITU-V1	55"	1920x1080	450 nits	1100:1	178°/178°
AG650HM-DS04N-ITU-W1	65"	1080x1920	450 nits	5000:1	178°/178°
AG650HM-DS04N-ITU-A1	65"	1080x1920	450 nits	5000:1	178°/178°



NOTE: specifications subject to change without notice.

THANK YOU

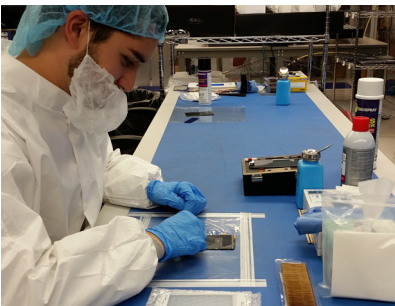
Thank You

|||||

COMMUNITY OF EXPERTS

Whether we are met with a new design or challenged with improving an existing design, AGDisplays supports your team by delivering unparalleled LCD expertise and technology. AGDisplays' partners benefit from our efficient design process and our dedication to creating quality design solutions.

We saw the need for off the shelf products, so we've added an expansive line of open/closed frame LCDs, digital signage, and all-in-one products. We offer unique LCD products like advanced touchscreen tabletops, high quality medical displays and rugged mobile devices. All of which can benefit from our value add integration services. Our products are used across many industries including Military, Avionics, Marine, Industrial, Medical, Transportation and many more.



CERTIFICATIONS

AGDisplays values high-quality working and design standards. We support your teams with the knowledge & expertise needed to make strategic design and manufacturing decisions.



CERTIFICATED PART 145
REPAIR STATION



AGDISPLAYS IS
ISO 14001, 45001 & R2
CERTIFIED

CONTACT US

HEADQUARTERS

AGDisplays, a dba of AssetGenie, Inc.
220 Huff Ave, Suite 400
Greensburg, PA 15601

CONTACT BY PHONE

Toll Free: 844-841-6851
Office: 724-552-4904
Fax: 724-552-4905

CONTACT BY EMAIL

sales@agdisplays.com
info@agdisplays.com
support@agdisplays.com

GET CONNECTED WITH AGDISPLAYS

Join our social community to stay in touch with all of our latest news, events and promotions.

