



220 Huff Ave, Suite 400
Greensburg, PA 15601



PH: (724) 552-4904
F: (724) 552-4905



sales@agdisplays.com
agdisplays.com



Advanced LCD Solutions Specialist

OFF THE SHELF LCD DISPLAYS



**OFF THE SHELF
VALUE ADDS
DESIGN SERVICES**

About Us



For over a decade AGDisplays has been a leading provider of high quality LCD enhancement products and services for the industrial markets. We lead the way in offering an extensive range of custom panel solutions that improve standard display attributes while maximizing performance in any environment. The AGDisplays teams are experts in LCDs, from building simple or complex designs to integration work including ruggedization.

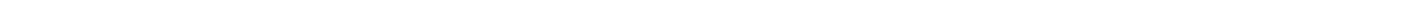
In our 124,000 sq. foot facility, we offer over 800 off the shelf products that include tablets, open and closed frame LCDs and much more. Our knowledge in innovative LCD technology and our high-quality control standards separate us from the rest. At AGDisplays, our teams have a true commitment to becoming your trusted partner.



OUR SERVICES

- Off The Shelf LCD Products
- NVIS Integration and Design
- OCA, Optical & Bonding Services
- Custom LED Integration & Design
- Touch Screen Integration & Design
- Custom Glass Supply Services
- Turnkey & Design Services
- EMI Shielding & Design

- Film Enhancements & Repolarization
- Certificated FAA Part 145 Repair Station
- Component Assembly & Integration
- LCD Controller, Cabling & Design
- Testing/Certification of EOL Panels
- Drop-in Replacement
- Industrial Repair Program
- Zero Dead Pixel Inspection



Industries Served



MILITARY



AVIONICS



HOTEL



MARINE



MARKETING



MEDICAL



RESTAURANT



RETAIL



TRANSPORTATION



Small Displays

||||||||||||||||||||

Part Number	Size (inches)	Resolution	Interface	Brightness (nits)	Viewing Angle
AG0225D-002N-NNU-V1	2.2	176x220	SPI	200	50/30/55/55
AG022CD-00UN-NNU-V1	2.23	128x32	Parallel/SPI/I2C	120	80/80/80/80
AG0220D-L01M-NNU-V1	2.26	16x2		100	90/90/90/90
AG0230D-002N-NNU-V1	2.3	320x240	CPU	200	60/50/60/60
AG0230D-006N-NNU-V1	2.36	320x320	MIPI	600	70/80/80/80
AG0240D-002N-NNU-V1	2.4	240x320	CPU	250	60/50/60/60
AG0240D-002N-NNU-VB	2.4	240x320	CPU	200	60/50/60/60
AG0240D-010R-NNU-V1	2.4	240x320	CPU	1000	50/30/45/45
AG0240D-002N-NNU-VA	2.4	240x320	MCU	250	
AG0240D-002N-RTU-V1	2.4	240x320	MCU	200	
AG0240D-008N-NNU-V1	2.4	240x320	MCU	800	
AG0240D-001N-RTU-V1	2.4	240x320	MCU/RGB	176	
AG0240D-002N-NNU-VC	2.4	240x320	MCU/RGB	220	80/80/80/80
AG0240D-002R-NNU-V1	2.4	240x320	RGB / CPU / SPI interface	250	70/70/70/70
AG0240D-003T-NNH-V1	2.4	240x320	a-Si	300	80/80/80/80
AG0240D-001T-NNU-V1	2.4	240x320	MCU-16 Bit	150	80/80/80/80
AG0240K-002N-NNU-V2	2.4		RGB	250	80/80/80/80
AG0240K-002N-NNU-V1	2.4	240x320	MIPI 1 Lane	250	30/50/50/50
AG0240H-008N-NNU-V1	2.4	240x320	MCU8/16 bit or RGB 18bit interface	850	80/80/80/80
AG024ED-LOYN-NNU-V1	2.42	128x64	8-Bit, SPI, I2C	70	80/80/80/80
AG024ED-00UN-NNU-V1	2.42	128x64	Parallel/SPI		



NOTE: specifications subject to change without notice.

Small Displays



Part Number	Size (inches)	Resolution	Interface	Brightness (nits)	Viewing Angle
AG033CU-005N-NUU-V1	3.34	320x320	MIPI	550	
AG034LD-002N-NUU-V1	3.47	320x480	8-Bits 80 series	240	
AG034LD-003N-NUU-V1	3.47	320x480	RGB	350	45/60/60/60
AG034LD-003N-NUU-VA	3.47	320x480	RGB	350	
AG035QD-001N-RTU-VB	3.5	320x240	18Bit/SPI	210	
AG035QD-002N-PTU-V1	3.5	320x240	18Bit/SPI	240	
AG035QD-004N-UUU-VB	3.5	320x240	18Bit/SPI	480	
AG035QD-001N-RTU-V1	3.5	240x320	18Bit/SPI/RGB	100	55/40/40/45
AG035QD-002N-NUU-V1	3.5	320x240	CPU	270	60/70/70/70
AG035QD-003N-NUU-VB	3.5	320x240	CPU	300	50/60/60/60
AG035VD-001R-NUU-V1	3.5	480x640	DBI	120	80/80/80/80
AG035QD-002N-RTU-VA	3.5	320x240	MCU/RGB	270	60/70/70/70
AG035QD-004N-NUU-V1	3.5	320x240	MCU/RGB	400	60/70/70/70
AG035LD-002N-NUU-V1	3.5	320x480	RGB	240	
AG035LD-003N-NUU-V1	3.5	320x480	RGB	300	55/65/65/65
AG035QK-N08N-UUM-V1	3.5	320x240	RGB	800	80/60/80/80
AG035QK-N10N-GOM-V1	3.5	320x240	RGB	1000	80/60/80/80
AG035QD-001N-NUU-V1	3.5	240x320	RGB	200	60/40/60/60
AG035QD-001T-NUU-V1	3.5	240x320	RGB	125	55/40/40/45
AG035QD-002N-CUU-V1	3.5	320x240	RGB	320	60/70/70/70
AG035QD-002N-NUU-VB	3.5	240x320	RGB	250	60/40/60/60
AG035QD-003N-NUU-V1	3.5	320x240	RGB	300	40/60/60/60
AG035QD-003N-NUU-V2	3.5	320x240	RGB	330	
AG035QD-006N-NUU-V1	3.5	320x240	RGB	600	

NOTE: specifications subject to change without notice.

Small Displays

|||||

Part Number	Size (inches)	Resolution	Interface	Brightness (nits)	Viewing Angle
AG035QD-006N-NUU-VA	3.5	320x240	RGB	600	50/60/60/60
AG035QD-006R-NUU-V1	3.5	320x240	RGB	600	40/60/60/60
AG035VD-003N-NUU-V1	3.5	480x640	RGB	350	70/70/60/70
AG035QD-002N-RTU-V1	3.5	320x240	RGB/CCIR	260	60/70/70/70
AG035QD-004N-UUU-V1	3.5	320x240	RGB/CCIR	480	40/60/60/60
AG035QD-002N-CTU-V1	3.5	320x240	RGB/CCIR656/601	270	50/60/60/60
AG035QD-002N-RTU-VB	3.5	320x240	RGB/CCIR656/601	210	
AG035QD-002N-NUU-V2	3.5	320x240	SPI/MCU/RGB	280	
AG035QW-003R-RTM-V1	3.5	320x240		300	55/55/45/50
AG035QD-003N-RTU-V1	3.5	320x240	RBC 24-BIT SERIAL	330	50/70/70/70
AG035VH-006N-RTM-V1	3.5	640x480	a-Si	650	50/70/70/70
AG035QD-002N-CTC-V1	3.5	320x240	RGB 24-bit with Serial	290	50/70/70/70
AG035QD-004N-NNG-V1	3.5	320x240	RGB	350	80/80/80/80
AG035QD-002N-NUU-V3	3.5	320x480	MCU	220	70/60/70/70
AG035QD-002N-CTC-V2	3.5	320x480	MCU	220	70/60/70/70
AG03500-009T-NUU-V1	3.5	1440x640	MIPI DSI 2 LANE	900	80/80/80/80
AG035VL-008N-NUU-V1	3.5	640x480	3 SPI+18 bit RGB interface	800	80/80/80/80
AG035QU-002N-NUU-V1	3.5	320x240	RGB888	280	65/55/65/65
AG035QU-006N-NUU-V1	3.5	320x240	RGB-18Bit	600	65/55/65/65
AG035VH-008N-RTM-V1	3.5	480x640	RGB-18Bit	800	60/60/55/45
AG0350U-002N-NUU-V1	3.5	320x480	RGB/MCU	280	55/65/65/65
AG037VD-004N-NUU-V1	3.7	480x640	RGB	400	
AG0387E-003N-NUU-V1	3.8	480x80	RGB	300	50/50/70/70
AG039MD-004N-NUU-V1	3.9	480x128	RGB	400	70/50/70/70
AG039MD-004N-NUU-VA	3.9	480x128	RGB	400	70/50/70/70
AG039MD-007N-NUU-V1	3.9	480x128	RGB	760	70/70/70/70
AG040VD-002N-NUU-V1	4	480x800	CPU	280	
AG0400D-005N-NUU-V1	4	640x1136	MIPI	580	80/80/80/80
AG040QD-002N-NUU-V1	4	320x240	RGB	200	
AG040RD-003N-NUU-V1	4	480x800	RGB	300	80/80/80/80
AG040RK-003N-NUU-V1	4	480x800	MIPI	350	
AG040NP-BIBY-NUU-V1	4	480x160	i2c		
AG0420D-00UN-NUU-V1	4.2	400x300	IIC		

NOTE: specifications subject to change without notice.



Small Displays



Part Number	Size (inches)	Resolution	Interface	Brightness (nits)	Viewing Angle
AG042FW-00ER-NNM-V1	4.2	400x300	MCU	30	
AG043ND-002N-NUU-VC	4.3	480x272	24Bit RGB	230	70/50/70/70
AG043ND-002N-UUU-V1	4.3	480x272	24Bit RGB	210	
AG043ND-004N-RTU-V1	4.3	480x272	24Bit RGB	480	70/50/70/70
AG043ND-007N-CTG-V1	4.3	480x272	24Bit RGB	760	50/70/70/70
AG043ND-N05N-CTG-V1	4.3	480x272	CMOS	550	70/50/70/70
AG043ND-002N-PTU-V1	4.3	480x272	CPU	240	70/50/70/70
AG043ND-002N-RTU-V1	4.3	480x272	CPU	240	70/50/70/70
AG043ND-002N-NUU-VF	4.3	480x272	MCU	250	
AG043ND-006N-NNM-V1	4.3	480x272	RBC	650	70/50/70/70
AG043EN-003N-CTG-V1	4.3	480x272	RGB	350	50/50/70/70
AG043EN-N03N-CTG-V1	4.3	480x272	RGB	340	50/50/70/70
AG043ND-002N-CTG-V1	4.3	480x272	RGB	230	70/50/70/70
AG043ND-002N-CTU-V1	4.3	480x272	RGB	200	55/65/65/65
AG043ND-002N-CUU-V1	4.3	480x272	RGB	230	50/70/70/70
AG043ND-002N-CUU-VB	4.3	480x272	RGB	230	50/70/70/70
AG043ND-002N-NUU-V1	4.3	480x272	RGB	270	50/70/70/70
AG043ND-002N-NUU-VA	4.3	480x272	RGB	280	55/65/65/65
AG043ND-002N-NUU-VB	4.3	480x272	RGB	280	70/50/70/70
AG043ND-002N-NUU-VD	4.3	480x272	RGB	280	
AG043ND-002N-NUU-VE	4.3	480x272	RGB	250	
AG043ND-002N-RTM-V1	4.3	480x272	RGB	220	70/50/70/70
AG043ND-002N-RTM-VD	4.3	480x272	RGB	280	80/60/80/80
AG043ND-002N-RTU-VA	4.3	480x272	RGB	240	55/65/65/65
AG043ND-002N-RTU-VB	4.3	480x272	RGB	200	
AG043ND-004N-NNM-V1	4.3	480x272	RGB	400	80/60/80/80
AG043ND-004N-NUU-V1	4.3	480x272	RGB	400	
AG043ND-004N-RTM-VD	4.3	480x272	RGB	400	70/50/70/70
AG043ND-005N-NNM-V1	4.3	480x272	RGB	500	65/65/65/65
AG043ND-005N-NUU-V1	4.3	480x272	RGB	520	70/70/70/70
AG043ND-005R-NUU-V1	4.3	480x272	RGB	500	50/70/70/70
AG043ND-006R-NUU-V1	4.3	480x272	RGB	650	70/70/70/70
AG043ND-007N-CUU-V1	4.3	480x272	RGB	760	50/70/70/70
AG043ND-007N-NNM-V1	4.3	480x272	RGB	750	80/80/80/80

NOTE: specifications subject to change without notice.

Small Displays



Part Number	Size (inches)	Resolution	Interface	Brightness (nits)	Viewing Angle
AG043ND-007N-RTM-V1	4.3	480x272	RGB	500	70/50/70/70
AG043ND-A08N-RTU-V1	4.3	480x272	RGB	800	50/70/70/70
AG043ND-N05N-CTG-VB	4.3	480x272	RGB	550	50/70/70/70
AG043ND-N07N-NNM-V1	4.3	480x272	RGB	700	80/80/80/80
AG0780D-008N-NNU-V1	4.3	480x272	RGB	850	50/70/70/70
AG043CN-004N-RTM-V1	4.3	480x272	RGB	400	55/60/60/60
AG043RS-003N-POG-V1	4.3	480x800	RGB	315	80/80/80/80
AG043ND-007N-CTG-V2	4.3	480x272	RGB-24Bit	770	70/50/70/70
AG043ND-005N-RTM-V1	4.3	480x272	RGB 24Bit	550	70/50/70/70
AG043NW-003R-RTM-V1	4.3	480x272		350	65/65/55/55
AG043RM-N03N-G0A-V1	4.3	480x800			
AG043ND-N04N-NNA-V1	4.3	480x272	RGB	450	50/70/70/70
AG043ND-N04N-NNM-V1	4.3	480x272	RGB	450	50/70/70/70
AG043ND-N04N-RTG-V1	4.3	480x272	RGB	400	50/70/70/70
AG043ND-002N-CTG-V2	4.3	480x272	RGB 24-Bit	260	50/70/70/70
AG043ND-003N-NNU-V1	4.3	480x272	RGB 24-Bit	380	60/70/75/75



NOTE: specifications subject to change without notice.

Small Displays



Part Number	Size (inches)	Resolution	Interface	Brightness (nits)	Viewing Angle
AG043ND-009N-NUU-V1	4.3	480x272	LVDS	900	70/50/70/70
AG043RH-003N-NUU-V1	4.3	800x480	RGB-24bit	350	80/80/80/80
AG043NN-A07N-PTM-V1	4.3	480x272	RGB 24-bit	700	75/75/75/75
AG043ND-003N-NUU-V2	4.3	480x272	RGB	300	
AG043ND-003N-RTM-V1	4.3	480x272	RGB	300	
AG043RD-004N-NUU-V1	4.3	800x480	RGB	400	
AG043ND-007N-CTG-VB	4.3	480x272	LVDS	700	
AG043RD-004N-NNG-V1	4.3	800x480	RGB	400	80/80/80/80
AG043NO-011T-NUU-V1	4.3	480x272	RGB	1100	80/80/80/80
AG043RH-010N-NUU-V1	4.3	800x480	RGB	1000	80/80/80/80
AG043ND-003N-CTG-V1	4.3	480x272	RGB	350	80/80/80/80
AG043ND-002N-NUU-V2	4.6	800x320	RGB	280	75/75/75/75
AD047QD-00UN-NUU-V1	4.72	320x240			
AG049YD-N02N-CTG-V1	4.97	720x1280	MIPI DSI	250	80/80/80/80
AG497HH-020N-NUU-V1	4.97	1080x1920	MIPI	2000	80/80/80/80
AG049AK-L02N-NUU-V1	4.97	720x1080	MIPI	275	



NOTE: specifications subject to change without notice.

Small Displays



Part Number	Size (inches)	Resolution	Interface	Brightness (nits)	Viewing Angle
AG050AD-005N-CTG-V1	5	720x1280	MIPI	500	80/80/80/80
AG050RU-008N-PTG-V1	5	800x480	LVDS	800	65/55/65/65
AG050RD-005N-NUU-V1	5	800x480	24-bit RGB	500	60/65/70/70
AG050AD-002N-CTG-V1	5	720x1280	MIPI	270	85/85/85/85
AG050RM-010N-NNM-V1	5	800x480	RGB 24bit	1000	70/70/70/70
AG050RH-003N-NUU-V1	5	800x480	RGB	350	65/55/65/65
AG050RU-010N-NUU-V1	5	800x480	RGB	1000	60/45/60/60
AG050RU-005N-NUU-V1	5	800x480	RGB	500	70/60/70/70
AG050RM-B15N-GOE-V1	5	800x480	CMOS	1500	85/85/85/85
AG050AA-005N-NNM-V1	5	720x1280	MIPI	570	89/89/89/89
AG050NH-003N-RTM-V1	5	480x272	24-bit RGB	300	65/55/65/65
AG054HD-003N-CTG-V1	5.46	1920x1080	MIPI	340	80/80/80/80
AG054HD-004N-NUU-V1	5.46	1080x1920	MIPI	400	80/80/80/80
AG055AD-003N-CTG-VA	5.46	1280x	MIPI	300	80/80/80/80
AG101WD-009N-PTU-V1	5.46	1280x	MIPI	900	80/80/80/80
AG055HU-006N-CTG-V1	5.46	1080x1920	MIPI	610	80/80/80/80
AG055HD-LO3N-NNC-V1	5.5	1080x1920	MIPI 4 Lane		
AG055HD-MO3N-CTG-V1	5.5	1080x1920	MIPI 4 Lane		
AG055AD-00UN-CTU-V1	5.5	720x1280	MIPI 4 Lane		
AG055KD-00UN-NUU-V1	5.5	256x64	Parallel/SPI		

NOTE: specifications subject to change without notice.

Small Displays



Part Number	Size (inches)	Resolution	Interface	Brightness (nits)	Viewing Angle
AG055AD-008N-CTG-V1	5.5	720x1280	MIPI	850	80/80/80/80
AG055HU-006N-NUU-V1	5.5	1080x1920	MIPI	600	
AG055HU-006N-NUU-V2	5.5	1080x1920	MIPI	650	
AG055HH-008N-NUU-V1	5.5	1080x1920	MIPI	800	
AG056VD-008N-NUU-V1	5.6	320x240	RGB	800	50/70/70/70
AG056VA-006N-RTU-V1	5.6	640x480	RGB	640	50/70/70/70
AG056VD-003N-NUU-V1	5.6	640x480	RGB	350	50/70/70/70
AG065VD-008R-NUU-V1	5.6	640x480	RGB	800	50/70/70/70
AG054QD-014N-NNM-V1	5.7	320x240	8Bit Parallel	1400	60/50/60/60
AG057VA-007N-NNM-V1	5.7	640x480	CMOS	700	70/70/80/80
AG057VA-N05N-NNM-V1	5.7	640x480	CMOS	530	70/70/80/80
AG057VA-P10R-NNM-V1	5.7	640x480	CMOS	1000	70/70/80/80
AG057QD-002N-UUU-V1	5.7	320x240	RGB	200	50/70/70/70
AG057QD-003N-RTU-V1	5.7	320x240	RGB	320	70/50/70/70
AG057QD-004N-NUU-V1	5.7	320x240	RGB	400	70/50/70/70
AG057QD-005N-NUU-V1	5.7	320x240	RGB	490	60/60/50/60
AG057QD-006N-UUU-V1	5.7	320x240	RGB	640	50/70/70/70
AG057VT-004N-CTG-V1	5.7	640x480	RGB	400	70/60/70/70



NOTE: specifications subject to change without notice.

Small Displays



Part Number	Size (inches)	Resolution	Interface	Brightness (nits)	Viewing Angle
AG050RD-008N-PTG-V1	5.7	640x480	RGB	860	60/40/70/70
AG057VD-003N-UUU-V1	5.7	640x480	RGB	340	
AG057VD-004N-CUU-V1	5.7	640x480	RGB	450	60/40/70/70
AG057VD-004N-NNU-V1	5.7	640x480	RGB	400	60/40/70/70
AG057VD-004N-UUU-V1	5.7	640x480	RGB	400	60/40/70/70
AG057VD-005N-NNU-V1	5.7	640x480	RGB	500	60/40/70/70
AG057VD-004N-NNU-VA	5.7	640x480	TTL	400	70/60/70/70
AG057VD-004N-RTU-V1	5.7	640x480	TTL	400	60/40/70/70
AG057VS-004N-RTM-V1	5.7	640x480	LVDS	490	75/80/80/80
AG057VA-003N-RTM-V1	5.7	640x480	TTL	320	85/85/85/85
AG057MD-006N-NNG-V1	5.7	1440x2560	MIPI	350	
AG057VD-005N-NNM-V1	5.7	640x480	RGB	550	80/80/80/80
AG057VD-005N-CTG-V1	5.7	640x480	RGB	500	80/80/80/80
AG057VK-005N-CTG-V1	5.7	640x480	Parallel RGB	250	80/80/80/80
AG058EH-004N-CTG-V1	5.8	800x320			
AG054HK-L05N-NNU-V1	5.9	1080x1920	MIPI	250	
AG060RD-00UN-UUU-V1	6	600x800	28 PIN		
AG057RD-004N-UUU-V1	6	800x480	RGB	400	

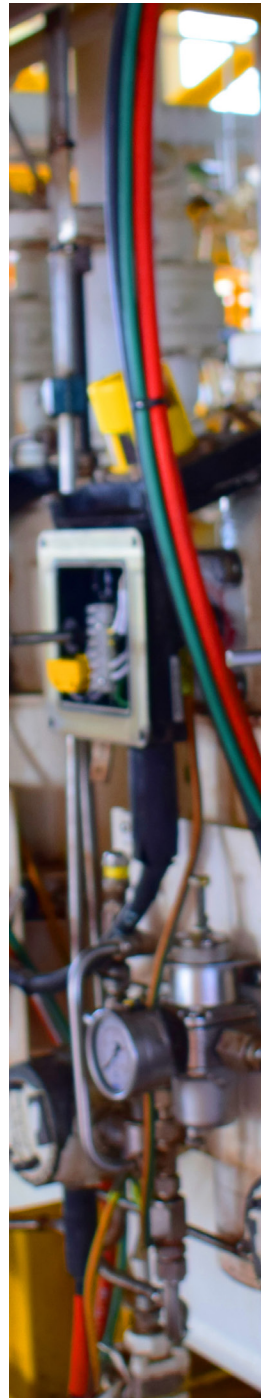


NOTE: specifications subject to change without notice.

Small Displays

|||||

Part Number	Size (inches)	Resolution	Interface	Brightness (nits)	Viewing Angle
AG062RD-004N-UUU-V1	6.2	800x480	RGB	400	
AG065VA-N06N-NNA V1	6.5	640x480	CMOS	600	60/60/70/70
AG065RD-004N-NNU-V1	6.5	800x480	RGB/I2C	400	50/70/70/70
AG065RD-006N-CUU-V1	6.5	800x480	RGB/I2C	360	50/70/70/70
AG0680D-003N-CTC-V1	6.8	480x1280	LVDS	390	80/80/80/80
AG0680D-004N-NNU-V1	6.8	480x1280	LVDS	450	80/80/80/80
AG068YD-004N-CTU-V1	6.8	480x1280	LVDS	390	80/80/80/80
AG069YD-004N-NNU-V1	6.95	800x1280	LVDS	400	89/89/89/89
AG069YD-004N-NNU-VA	6.95	800x1280	LVDS	400	85/85/85/85
AG069YD-004N-UUU-V1	6.95	1280x800	LVDS	400	
AG069YD-003N-CTU-V1	6.95	800x1280	MIPI	300	80/80/80/80
AG069YD-003N-NNU-V1	6.95	800x1280	MIPI	300	89/89/89/89
AG069YD-003N-NNU-VA	6.95	800x1280	MIPI	350	80/80/80/80
AG070RD-005N-RTM-V1	7	800x480	RGB	560	50/70/70/70
AG070RD-002N-NNU-VC	7	800x480	CPU	250	50/70/70/70
AG070RD-002N-RTU-V1	7	800x480	CPU	200	50/70/70/70
AG070RD-003N-CTC-V1	7	800x480	Digital	340	50/70/70/70
AG070RD-003N-RTM-V1	7	800x480	Digital/ RGB	350	50/70/70/70
AG070RD-003N-CTU-V1	7	800x480	Digital/t RGB	300	50/70/70/70
AG070RD-006N-RTU-V2	7	800x480	Digital/t RGB	640	50/70/70/70
AG070RD-006N-UUU-V1	7	800x480	Digital/t RGB	600	50/70/70/70
AG070RD-008N-NNU-VC	7	800x480	Digital/t RGB	800	50/70/70/70
AG070ER-N10N-COC-V1	7	800x480	LVDS	1000	50/70/70/70
AG070RD-002N-CTU-V1	7	800x480	LVDS	250	
AG070RD-002N-CUU-VB	7	800x480	LVDS	250	50/70/70/70
AG070RD-002N-NNU-VB	7	800x480	LVDS	280	50/70/70/70
AG070RD-002N-RTC-V1	7	800x480	LVDS	200	50/70/70/70
AG070RD-005N-CTU-V1	7	800x480	LVDS	630	50/70/70/70
AG070RD-005N-NNU-V1	7	800x480	LVDS	500	60/60/70/70
AG070RD-005N-RTM-V2	7	800x480	LVDS	560	50/70/70/70
AG070RD-005N-UUU-V1	7	800x480	LVDS	560	50/70/70/70
AG070RD-006N-PTU-V1	7	800x480	LVDS	630	50/70/70/70
AG070RD-A07N-NNU-V1	7	800x480	LVDS	700	50/70/70/70
AG101WD-008N-RTU-V1	7	800x480	LVDS	800	



NOTE: specifications subject to change without notice.

Small Displays



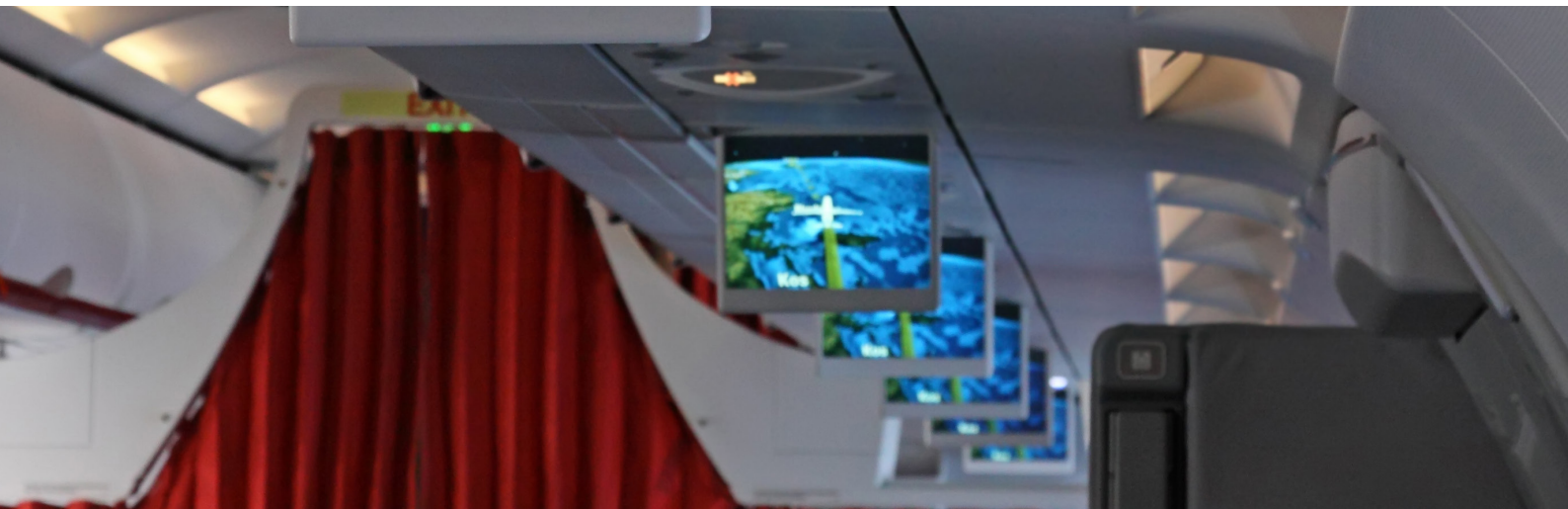
Part Number	Size (inches)	Resolution	Interface	Brightness (nits)	Viewing Angle
AG070WD-002N-CTU-V1	7	1024x600	LVDS	210	65/55/65/65
AG070WD-002N-NNM-V1	7	1024x600	LVDS	250	80/80/80/80
AG070WD-002N-NUU-V1	7	1024x600	LVDS	230	
AG070WD-002N-NUU-VB	7	1024x600	LVDS	250	85/85/85/85
AG070WD-002N-NUU-VC	7	1024x600	LVDS	250	85/85/85/85
AG070WD-002N-PTG-VB	7	1024x600	LVDS	210	80/80/80/80
AG070WD-002N-RTU-V1	7	1024x600	LVDS	200	80/80/80/80
AG070WD-003N-NUU-V1	7	1024x600	LVDS	350	85/85/85/85
AG070WD-004N-CTG-V1	7	1024x600	LVDS	430	70/75/75/75
AG070WD-004N-PTG-V1	7	1024x600	LVDS	250	80/80/80/80
AG070WD-004N-PTU-V1	7	1024x600	LVDS	450	65/55/65/65
AG070WD-004N-UUU-V1	7	1024x600	LVDS	400	65/55/65/65
AG070WD-005N-NUU-VB	7	1024x600	LVDS	500	70/75/75/75
AG070WD-005N-NUU-VC	7	1024x600	LVDS	500	65/55/65/65
AG070WD-006N-NUU-V1	7	1024x600	LVDS	600	80/80/80/80
AG070WD-008N-CTG-V1	7	1024x600	LVDS	850	80/80/80/80
AG070WD-008N-CTU-V1	7	1024x600	LVDS	210	85/85/85/85
AG070WD-008N-RTU-V1	7	1024x600	LVDS	200	85/85/85/85
AG070WD-00UN-UUU-V1	7	1024x600	LVDS	500	
AG070WD-A07N-NNM-V1	7	1024x600	LVDS	700	
AG070WC-003N-NNM-V1	7	1024x600	LVDS	300	60/60/70/70
AG070WC-B07R-NNA-V1	7	1024x600	LVDS	700	60/60/70/70
AG070WC-B07R-NNM-V1	7	1024x600	LVDS	700	60/60/70/70
AG070WC-P04R-NNA-V1	7	1024x600	LVDS	400	60/60/70/70
AG070WC-P04R-NNM-V1	7	1024x600	LVDS	400	60/60/70/70
AG070RD-007R-NUU-VB	7	800x480	LVDS	700	50/70/70/70
AG070RD-008N-NUU-V2	7	800x480	LVDS	800	50/70/70/70
AG070RS-N04R-POG-V1	7	800x480	LVDS	400	85/85/85/85
AG070RA-010N-POG-V1	7	800x480	LVDS	1000	80/80/80/80
AG070RA-B10N-NUU-V1	7	800x480	LVDS	1000	80/80/80/80
AG070RA-B15N-NUU-V1	7	800x480	LVDS	1500	80/80/80/80
AG070RA-004N-POG-V1	7	800x480	LVDS	400	80/80/80/80
AG070WD-002N-CTG-V1	7	1024x600	LVDS/I2C	210	85/85/85/85
AG070WD-002N-CTG-V2	7	1024x600	LVDS/I2C	200	70/75/75/75

NOTE: specifications subject to change without notice.

Small Displays

|||||

Part Number	Size (inches)	Resolution	Interface	Brightness (nits)	Viewing Angle
AG070WD-002N-CUU-VB	7	1024x600	LVDS/I2C	210	
AG070ID-003N-NUU-V1	7	1200x1920	MIPI	350	89/89/89/89
AG070ER-002N-CTC-V1	7	800x480	RGB	200	50/70/70/70
AG070ER-002N-CTC-V1	7	800x480	RGB	180	50/70/70/70
AG070RD-002N-CUU-V1	7	800x480	RGB	220	50/70/70/70
AG070RD-002N-NUU-V1	7	800x480	RGB	280	50/70/70/70
AG070RD-002N-UUU-V1	7	800x480	RGB	200	50/70/70/70
AG070RD-003N-NUU-V1	7	800x480	RGB	300	50/70/70/70
AG070RD-003N-NUU-VB	7	800x480	RGB	400	50/70/70/70
AG070RD-003N-RTM-VB	7	800x480	RGB	390	50/70/70/70
AG070RD-003N-RTU-V1	7	800x480	RGB	320	50/70/70/70
AG070RD-003N-RTU-VB	7	800x480	RGB	390	50/70/70/70
AG070RD-003N-UUU-V1	7	800x480	RGB	320	
AG070RD-003R-NUU-V1	7	800x480	RGB	320	50/70/70/70
AG070RD-004N-CTC-V1	7	800x480	RGB	430	50/70/70/70
AG070RD-004N-CTC-VB	7	800x480	RGB	430	50/70/70/70
AG070RD-004N-NUU-V1	7	800x480	RGB	400	50/70/70/70
AG070RD-004N-NUU-VB	7	800x480	RGB	400	
AG070RD-004N-NUU-VC	7	800x480	RGB	450	50/70/70/70
AG070RD-005N-NUU-VB	7	800x480	RGB	500	50/70/70/70



NOTE: specifications subject to change without notice.

Small Displays



Part Number	Size (inches)	Resolution	Interface	Brightness (nits)	Viewing Angle
AG070WU-003N-PTG-V1	7	1024x600	LVDS	300	80/80/80/80
AG070RD-003N-CTG-V3	7	800x480	24-Bit RGB	350	50/70/70/70
AG070RU-008N-RTM-V1	7	800x480	RGB888/24bits	800	65/55/65/65
AG070RU-010N-NNU-V1	7	800x480	RGB888	1000	65/55/65/65
AG070RH-005N-NNU-V1	7	800x480	24-bit RGB	500	50/70/70/70
AG070YA-A10N-COE-V1	7	1280x800	LVDS	1000	80/80/80/80
AG070RK-A10N-COM-V1	7	800x480	LVDS	1000	85/85/85/85
AG070WD-005N-NNU-V2	7	1024x600	LVDS	500	85/85/85/85
AG070WD-004N-CTG-V3	7	1024x600	LVDS	430	85/85/85/85
AG070RK-010N-NNM-V1	7	800x480	LVDS	1000	85/85/85/85
AG070RD-012N-NNU-V1	7	800x480	RGB	1200	40/60/60/60
AG070RA-012N-NNU-V1	7	800x480	RGB	1250	40/60/60/60
AG070WH-004N-CTG-V1	7	1024x600	LVDS	400	80/80/80/80
AG070WU-004N-CTG-V1	7	1024x600	LVDS	420	80/80/80/80
AG070WH-005N-CTG-V1	7	1024x600	LVDS	500	85/85/85/85
AG070WD-002N-CTG-V3	7	1024x600	LVDS	220	85/85/85/85
AG070WH-004N-CTG-V2	7	1024x600	LVDS	400	80/80/80/80
AG070RD-005N-NNU-V4	7	800x480	24-bit RGB	500	50/70/70/70



NOTE: specifications subject to change without notice.

Medium Displays



Part Number	Size (inches)	Resolution	Interface	Brightness (nits)	Viewing Angle
AG070RD-004N-CTC-V1	7	800x480	24-BIT RGB	430	50/70/70/70
AG070YU-008N-NNU-V1	7	800x1280	MIPI	800	
AG070YH-012N-NNU-V1	7	800x1280	MIPI	1200	
AG070RH-005N-NNU-V2	7	800x480	RGB	500	50/70/70/70
AG070RK-003N-NNU-V1	7	800x480	RGB	300	50/70/70/70
AG070YA-010N-NNU-V1	7	1280x800	LVDS	1000	80/80/80/80
AG0780D-004N-CTU-V1	7.84	400x1280	LVDS	425	80/80/80/80
AG0780D-004N-NNU-V1	7.84	400x1280	LVDS	450	85/85/85/85
AG0780D-008N-NNU-V1	7.84	400x1280	LVDS	850	80/80/80/80
AG080XD-00UN-UUU-V1	8	768x1024	29 Pin		
AG080RD-006N-NNU-V1	8	800x480	Digital	600	50/70/70/70
AG080RD-002N-RTU-V1	8	800x600	LVDS	250	50/70/70/70
AG080SD-002N-NNU-VB	8	800x600	LVDS	250	50/70/70/70
AG080WD-005N-NNU-V1	8	1024x600	LVDS	500	70/75/75/75
AG080XD-003N-CUU-V1	8	1024x768	LVDS	300	
AG080XD-003N-NNU-V1	8	1024x768	LVDS	350	
AG080SD-002N-NNU-V1	8	800x600	RGB	250	50/70/70/70
AG080RD-004N-NNU-V1	8	800x480	RGB	450	50/70/70/70
AG080XD-A10N-NNU-V1	8	800x480	RGB	1000	50/70/70/70

NOTE: specifications subject to change without notice.

Medium Displays



Part Number	Size (inches)	Resolution	Interface	Brightness (nits)	Viewing Angle
AG101WD-003N-NUU-VB	10.1	1024x600	LVDS	380	65/55/65/65
AG101WD-003N-NUU-VC	10.1	1024x600	LVDS	350	65/75/60/60
AG101WD-010N-NUU-V1	10.1	1024x600	LVDS	1000	85/60/85/85
AG101WD-030N-NNG-V1	10.1	1024x600	LVDS	300	65/55/65/65
AG101WT-P06R-NNG-V1	10.1	1024x600	LVDS	600	50/80/80/80
AG101WA-B10N-NUU-V1	10.1	1024x600	LVDS	1000	60/60/70/70
AG101WA-B15N-NUU-V1	10.1	1024x600	LVDS	1500	60/60/70/70
AG101WD-007N-CTG-V1	10.1	1024x600	LVDS	700	65/55/65/65
AG101HT-U12N-NUU-V1	10.1	1920x1080	LVDS	1200	85/85/85/85
AG101WD-003N-PTU-V1	10.1	1024x600	LVDS	315	65/55/65/65
AG101YD-002N-CUU-VB	10.1	1280x800	LVDS	240	85/85/85/85
AG101YD-002N-NUU-V1	10.1	1280x800	LVDS	280	85/85/85/85
AG101YD-002N-NUU-VB	10.1	1280x800	LVDS	260	85/85/85/85
AG101YD-003N-CTG-V1	10.1	1280x800	LVDS	300	85/85/85/85
AG101YD-003N-CTU-V1	10.1	1280x800	LVDS	300	85/85/85/85
AG101YD-003N-NUU-V1	10.1	1280x800	LVDS	350	85/85/85/85
AG101YD-004N-NUU-VA	10.1	1280x800	LVDS	400	85/85/85/85
AG101YD-005N-NUU-VB	10.1	1280x800	LVDS	500	85/85/85/85
AG101WD-007N-CUU-V1	10.1	1024x600	LVDS/I2C	750	85/60/85/85
AG101WD-008N-CTG-V1	10.1	1024x600	LVDS/I2C	800	85/60/85/85
AG101YD-002N-CUU-V1	10.1	1280x800	LVDS/I2C	240	85/85/85/85



NOTE: specifications subject to change without notice.

Medium Displays



Part Number	Size (inches)	Resolution	Interface	Brightness (nits)	Viewing Angle
AG101YD-002N-CUU-VC	10.1	1280x800	LVDS/USB	220	85/85/85/85
AG101YD-008N-CTG-V1	10.1	1280x800	LVDS/VGH/VGL	800	85/85/85/85
AG101ID-003N-NUU-V1	10.1	1920x1200	MIPI	320	85/85/85/85
AG101ID-003N-NUU-VA	10.1	1920x1200	MIPI	320	85/85/85/85
AG101YD-002N-CTG-V1	10.1	800x1280	MIPI 4 Lane	210	89/89/89/89
AG101WD-001N-NUU-V1	10.1	1024x600	RGB	130	65/75/60/60
AG101WD-003N-CTG-VD-USB	10.1	1024x600	RGB	300	65/55/65/65
AG101WD-030N-NUU-V1	10.1	1024x600	RGB	300	65/55/65/65
AG101WD-003N-CTG-V1	10.1	1024x600			
AG101WD-003N-CTG-V2	10.1	1024x600			
AG057VD-008N-NUU-V1	10.1	1280x800	LVDS	900	85/85/85/85
AG101YD-005N-NUU-V1	10.1	1280x800	LVDS	500	85/85/85/85
AG101YD-003N-CTU-V2	10.1	1280x800	LVDS	350	85/85/85/85
AG101YD-005N-CTG-V1	10.1	1280x800	LVDS	560	85/85/85/85
AG101YD-003N-CTG-V2	10.1	1280x800	LVDS	350	85/85/85/85
AG101YA-005N-RTA-V1	10.1	1280x800	LVDS	500	85/85/85/85
AG101YA-010N-ROU-V1	10.1	1280x800	LVDS	1000	85/85/85/85
AG101YA-A10N-GOM-V1	10.1	1280x800	LVDS	1000	85/85/85/85
AG101WD-009N-NUU-V1	10.1	1024x600		900	55/65/65/65
AG101WN-A07N-PTM-V1	10.1	1024x600	4-CHANNEL LVDS	700	75/75/75/75
AG101WD-003N-NUU-V1	10.1	1024x600	LVDS	350	



NOTE: specifications subject to change without notice.

Medium Displays



Part Number	Size (inches)	Resolution	Interface	Brightness (nits)	Viewing Angle
AG101WD-003N-RTM-V1	10.1	1024x600	LVDS	300	
AG101WD-005N-NUU-V1	10.1	1024x600	LVDS	500	
AG101YD-005N-CTG-V2	10.1	1280x800	LVDS	560	85/85/85/85
AG101YU-005N-CTG-V1	10.1	1280x800	LVDS	500	80/80/80/80
AG101YH-010N-NUU-V1	10.1	1280x800	LVDS	1000	85/85/85/85
AG101YU-007N-CTG-V1	10.1	1280x800	LVDS	700	80/80/80/80
AG101YA-005N-NNA-V1	10.1	1280x800	LVDS	500	85/85/85/85
AG101YA-010N-PTG-V1	10.1	1200x800	LVDS	1000	85/85/85/85
AG101WD-003N-CTG-V3	10.1	1024x600	LVDS	330	65/55/65/65
AG101YH-007N-NUU-V1	10.1	800x1280	MIPI	700	
AG102RD-002N-NUU-V1	10.2	800x480	RGB	250	45/65/65/65
AG102RD-003N-NUU-V1	10.2	800x480	RGB	350	45/65/65/65
AG104SD-003N-PTU-V1	10.4	800x600	6Bit 1Ch LVDS	300	60/70/70/70
AG104SD-003N-RTU-VB	10.4	800x600	6Bit 1Ch LVDS	300	60/70/70/70
AG104SD-004N-NUU-VC	10.4	800x600	6Bit 1Ch LVDS	400	60/70/70/70
AG104VN-018R-NNM-V1	10.4	640x480	CMOS	1800	80/80/80/80
AG104VN-A18N-NNM-V2	10.4	640x480	CMOS	1800	80/80/80/80
AG104SD-002N-CTU-V1	10.4	800x600	LVDS	260	60/70/70/70
AG104SD-002N-CTU-V2	10.4	800x600	LVDS	260	60/70/70/70
AG104SD-003N-NUU-V1	10.4	800x600	LVDS	300	60/70/70/70
AG104SD-003N-NUU-VB	10.4	800x600	LVDS	350	



NOTE: specifications subject to change without notice.

Medium Displays



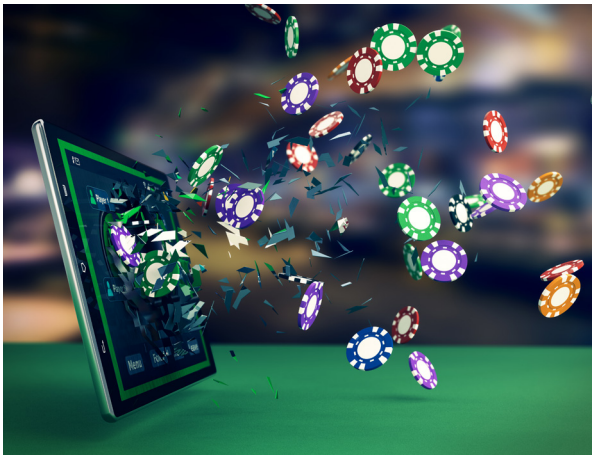
Part Number	Size (inches)	Resolution	Interface	Brightness (nits)	Viewing Angle
AG104XA-A10N-POG-V1	10.4	1024x768	LVDS	1000	89/89/89/89
AG104XA-004N-NNM-V1	10.4	1024x768	LVDS	470	89/89/89/89
AG104XR-011N-NNM-V1	10.4	1024x768	LVDS	1100	88/88/88/88
AG104XK-N10N-GOU-V1	10.4	1024x768	LVDS	1000	85/85/85/85
AG116WD-020N-NUU-V1	11.6	1024x600	LVDS	200	
AG121SD-003N-CTC-V1	12.1	800x600	LVDS	380	65/75/80/80
AG121SD-003N-RTC-V1	12.1	800x600	LVDS	340	65/75/80/80
AG121SD-004N-NUU-V1	12.1	800x600	LVDS	400	65/75/80/80
AG121SD-004N-NUU-VB	12.1	800x600	LVDS	450	89/89/89/89
AG121YI-B10N-NNM-V1	12.1	800x600	LVDS	1000	65/75/80/80
AG121SA-B10R-NNA-V1	12.1	800x600	LVDS	1000	65/75/80/80
AG121XA-B10N-NNM-V1	12.1	800x600	LVDS	1000	65/75/80/80
AG121YD-004N-NUU-V1	12.1	1280x800	LVDS	400	88/88/88/88
AG121SD-A10N-NUU-V1	12.1	1280x800	LVDS	1000	89/89/89/89
AG121YA-B10N-NNM-V2	12.1	1280x800	LVDS	1000	88/88/88/88
AG121XD-004N-NUU-V1	12.1	1024x768	LVDS	450	
AG121XD-005N-NUU-V1	12.1	1024x768	LVDS	500	70/70/80/80
AG121XD-006R-NUU-V1	12.1	1024x768	LVDS	600	70/70/80/80
AG121SA-B10N-NNM-V1	12.1	1024x768	LVDS	1000	80/80/80/80
AG121XA-B10N-NNM-V2	12.1	1024x768	LVDS	1000	80/80/80/80
AG121XA-B15N-NNM-V1	12.1	1024x768	LVDS	1500	80/80/80/80
AG121XA-010N-NNM-V1	12.1	1024x768	LVDS	1000	70/70/80/80
AG121XD-003N-CTU-V1	12.1	1024x768	LVDS	390	80/80/80/80
AG121YD-004N-NUU-V2	12.1	1280x800	LVDS	450	85/85/85/85
AG121YD-A03N-PTC-V1	12.1	1280x800	LVDS	340	88/88/88/88
AG121XA-005N-RTM-V1	12.1	1024x768	LVDS	500	70/70/80/80
AG121XA-A10N-ROU-V1	12.1	1024x768	LVDS	1000	70/70/80/80
AG121XI-A06N-GPE-V1	12.1	1024x768	LVDS	600	70/70/80/80
AG121XA-P05N-GOM-V1	12.1	1024x768	LVDS	500	70/70/80/80
AG121XA-A05N-PTC-V1	12.1	1024x768	LVDS	500	80/80/80/80
AG121XA-005N-NNM-V1	12.1	1024x768	LVDS	500	70/70/80/80
AG121XH-004N-NUU-V1	12.1	1024x768	LVDS	450	80/80/80/80
AG121YD-003N-CTC-V1	12.1	1280x800	LVDS	350	88/88/88/88

NOTE: specifications subject to change without notice.

Medium Displays

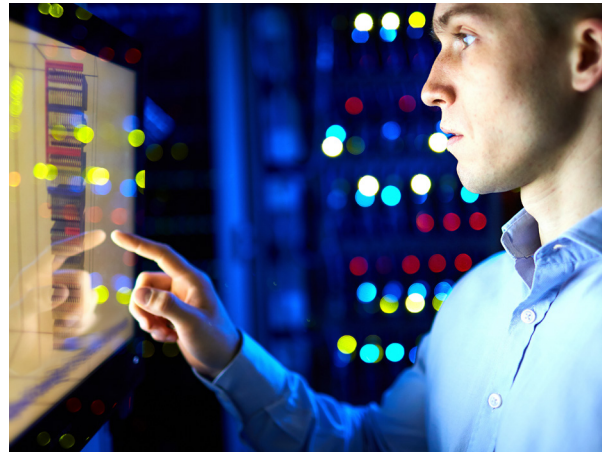


Part Number	Size (inches)	Resolution	Interface	Brightness (nits)	Viewing Angle
AG121XM-004N-RTM-V1	12.1	1024x768	LVDS 6/8 bit	480	85/85/85/85
AG121SD-004N-NUU-V2	12.1	800x600	LVDS	400	65/75/80/80
AG121XU-004N-NUU-V1	12.1	1024x768	LVDS	450	80/80/80/80
AG121YA-005N-NNM-V1	12.1	1280x800	1 ch. LVDS	500	89/89/89/89
AG121YA-A05N-CTG-V1	12.1	1280x800	LVDS	500	89/89/89/89
AG123GH-010N-NUU-V1	12.3	1920x720	Dual Channel LVDS	1000	85/85/85/85
AG133HA-003N-PTG-V1	13.3	1920x1080	2 Lane eDP		85/85/85/85
AG133HD-002N-UUU-V1	13.3	1920x1080	eDP	250	
AG133HA-B10N-NNM-V1	13.3	1920x1080	LVDS	1000	85/85/85/85
AG133HA-B15N-NNM-V1	13.3	1920x1080	LVDS	1500	85/85/85/85
AG140ZD-002N-UUU-V1	14	1366x768	LVDS	200	
AG150XD-002N-CUU-V1	15	1024x768	LVDS	200	70/60/80/80
AG150XD-002N-NUU-V1	15	1024x768	LVDS	250	80/80/80/80
AG150XD-002N-RTU-V1	15	1024x768	LVDS	230	70/60/80/80
AG150XD-003N-CTU-V1	15	1024x768	LVDS	250	70/60/80/80
AG150XD-003N-NUU-V1	15	1024x768	LVDS	300	70/60/80/80
AG150XD-003N-NUU-V2	15	1024x768	LVDS	300	88/88/88/88
AG150XD-004N-NUU-V1	15	1024x768	LVDS	400	80/80/80/80
AG150XA-B10N-NNM-V1	15	1024x768	LVDS	1000	85/85/80/80
AG150XA-B10N-NNM-VB	15	1024x768	LVDS	1000	70/60/80/80



NOTE: specifications subject to change without notice.

Large Displays



Part Number	Size (inches)	Resolution	Interface	Brightness (nits)	Viewing Angle
AC150XA-B15N-NNM-V1	15	1024x768	LVDS	1500	60/80/80/80
AC150XA-B15N-NNM-VB	15	1024x768	LVDS	1500	60/80/80/80
AC150XD-008N-CTU-V1	15	1024x768	LVDS	850	70/60/80/80
AC150AX-B16N-ROM-V1	15	1024x768	LVDS	1600	70/80/80/80
AC150XA-P03N-COM-V1	15	1024x768	LVDS	300	70/80/80/80
AC150XD-004N-NNU-V2	15	1024x768	LVDS	450	
AC150XA-P16N-COM-V1	15	1024x768	LVDS	1600	80/60/80/80
AC150XS-A03N-PTG-V1	15	1024x768	LVDS (1 ch, 8-bit)	350	85/85/85/85
AC150XA-A05N-CTG-V1	15	1024x768	LVDS	500	89/89/89/89
AC150XA-004N-NNM-V1	15	1024x768	LVDS	450	70/80/80/80
AC150XA-005N-NNM-V1	15	1024x768	LVDS	500	70/80/80/80
AC150XA-010N-ROG-V1	15	1024x768		1000	
AC150XA-016N-NNM-V1	15	1024x768	LVDS	1600	70/80/80/80
AC150XM-A15N-ROG-V1	15	1024x768	LVDS	1500	80/80/60/80
AC156HD-002N-NNU-V1	15.6	1920x1080	2 Lane eDP	220	
AC156HD-003N-NNU-V1	15.6	1920x1080	2 Lane eDP	300	85/85/85/85
AC156HA-003N-POG-V1	15.6	1920x1080	2 Lane eDP	300	85/85/85/85
AC156HA-002N-PTG-V1	15.6	1920x1080	LVDS	220	85/85/85/85
AC156ZD-001N-CUU-V1	15.6	1366x768	LVDS	190	20/45/45/45
AC156ZD-002N-CUU-V1	15.6	1366x768	LVDS	200	50/45/45/45

NOTE: specifications subject to change without notice.

Large Displays



Part Number	Size (inches)	Resolution	Interface	Brightness (nits)	Viewing Angle
AG156ZD-002N-NNU-V1	15.6	1366x768	LVDS	220	20/40/45/45
AG156HA-B04N-GTM-V1	15.6	1920x1080			
AG156ZI-003N-CTG-V1	15.6	1366x768			
AG156ZI-003N-STG-V1	15.6	1366x768			
AG156ZD-003N-NNM-V1	15.6	1366x768	LVDS	300	80/80/80/80
AG156HN-P15N-GOM-V1	15.6		2-Lane eDP		
AG156HA-005N-NNA-V1	15.6	1920x1080	2-Lane eDP	500	89/89/89/89
AG156HA-005N-NNM-V1	15.6	1920x1080	Dual Channel LVDS	500	89/89/89/89
AG156HN-015N-NNM-V1	15.6	1920x1080	eDP	1500	88/88/88/88
AG156ZN-012N-NNM-V1	15.6	1366x768	LVDS	1250	80/80/80/80
AG173HA-B10N-NNM-V1	17	1920x1080	Dual Channel LVDS	1000	89/89/89/89
AG170TA-B10N-NNM-V1	17	1280x1024	Dual Channel LVDS	1000	60/80/80/80
AG170TA-B10N-NNM-VB	17	1280x1024	Dual Channel LVDS	1000	80/80/85/85
AG170TA-B10N-NNM-VC	17	1280x1024	Dual Channel LVDS	1000	80/80/85/85
AG170TA-B10N-NNM-VD	17	1280x1024	Dual Channel LVDS	1000	80/80/85/85
AG170TA-B10N-ROM V1	17	1280x1024	Dual Channel LVDS	1000	60/80/80/80
AG170TD-002N-NNU-V1	17	1280x1024	LVDS	250	80/80/85/85
AG170TA-B10N-CTM-V1	17	1280x1024	Dual Channel LVDS	1000	80/80/85/85
AG170HP-A15N-GOA-V1	17	1920x1080	Dual Channel LVDS	1500	89/89/89/89
AG170HP-A20N-GOA-V1	17	1920x1080	Dual Channel LVDS	2000	89/89/89/89
AG170TA-012N-NNM-V1	17	1280x1024	Dual Channel LVDS	1200	60/80/80/80
AG173HA-B15N-NNM-V1	17.3	1920x1080	Dual Channel LVDS	1500	60/80/80/80
AG185ZA-B10N-NNM-V1	17.3	1920x1080	Dual Channel LVDS	1000	60/80/80/80



NOTE: specifications subject to change without notice.

Large Displays



Part Number	Size (inches)	Resolution	Interface	Brightness (nits)	Viewing Angle
AG238HA-004N-NNM-V1	23.8	1920x1080	Dual Channel LVDS	400	89/89/89/89
AG238HA-004N-NNM-VB	23.8	1920x1080	Dual Channel LVDS	400	89/89/89/89
AG238HA-006N-NNM-V1	23.8	1920x1080	Dual Channel LVDS	625	89/89/89/89
AG101YD-010N-CTG-V1	24	1920x1080	Dual Channel LVDS	1000	89/89/89/89
AG240HA-B10N-NNM-V1	24	1920x1080	Dual Channel LVDS	1000	89/89/89/89
AG240HA-B10N-NNM-VB	24	1920x1080	Dual Channel LVDS	1000	89/89/89/89
AG240HA-B10N-PTG-V1	24	1920x1080	Dual Channel LVDS	1000	89/89/89/89
AG240IA-003N-GOG-V1	24	1920x1200	LVDS	300	89/89/89/89
AG240IA-P03N-GTM-V1	24	1920x1200	LVDS	300	89/89/89/89
AG240HA-B05N-GOM-V1	24	1920x1080	LVDS	500	89/89/89/89
AG240HA-B10N-GOM-V1	24	1920x1080	LVDS	1000	89/89/89/89
AG240IA-003N-GOM-V1	24	1920x1080	LVDS	300	89/89/89/89
AG270HA-010N-NNM-V1	27	1920x1080			
AG270HA-003N-NNM-V1	27	1920x1080	LVDS	300	89/89/89/89
AG270HA-003N-PTG-V1	27	1920x1080	LVDS	300	89/89/89/89
AG2800K-DS07N-NUU-V1	28	1920x360		700	89/89/89/89
AG315HA-005N-NNM-V1	31.5	1920x1080	Dual Channel LVDS	500	89/89/89/89
AG001BD-00UN-UUU-V1	1.5	128x128	Parallel /I2C/ SPI		
AG001BD-00UN-UUU-VA	1.5	128x128	Parallel /I2C/ SPI		
AG104XD-003N-RTU-VB	10.4"	1024x768	LVDS	340	80/80/80/80
AG024ED-LOWN-NUU-V1	2.42	128x64	Parallel /I2C/ SPI		



NOTE: specifications subject to change without notice.

THANK YOU

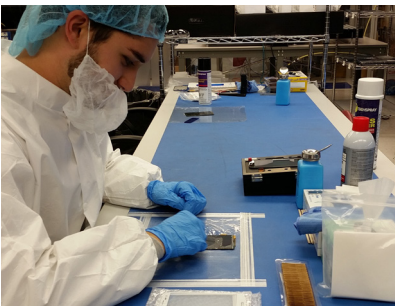
Thank You

|||||

COMMUNITY OF EXPERTS

Whether we are met with a new design or challenged with improving an existing design, AGDisplays supports your team by delivering unparalleled LCD expertise and technology. AGDisplays' partners benefit from our efficient design process and our dedication to creating quality design solutions.

We saw the need for off the shelf products, so we've added an expansive line of open/closed frame LCDs, digital signage, and all-in-one products. We offer unique LCD products like advanced touchscreen tabletops, high quality medical displays and rugged mobile devices. All of which can benefit from our value add integration services. Our products are used across many industries including Military, Avionics, Marine, Industrial, Medical, Transportation and many more.



CERTIFICATIONS

AGDisplays values high-quality working and design standards. We support your teams with the knowledge & expertise needed to make strategic design and manufacturing decisions.



CERTIFICATED PART 145
REPAIR STATION



AGDISPLAYS IS
ISO 14001, 45001 & R2
CERTIFIED

CONTACT US

HEADQUARTERS

AGDisplays, a dba of AssetGenie, Inc.
220 Huff Ave, Suite 400
Greensburg, PA 15601

CONTACT BY PHONE

Toll Free: 844-841-6851
Office: 724-552-4904
Fax: 724-552-4905

CONTACT BY EMAIL

sales@agdisplays.com
info@agdisplays.com
support@agdisplays.com

GET CONNECTED WITH AGDISPLAYS

Join our social community to stay in touch with all of our latest news, events and promotions.

