



220 Huff Ave, Suite 400  
Greensburg, PA 15601



PH: (724) 552-4904  
F: (724) 552-4905



sales@agdisplays.com  
agdisplays.com



Advanced LCD Solutions Specialist

# MEDICAL DISPLAYS



FRIDAY 02.10..2017  
01:03:32.500  
HR . MIN . SEC . MS

**COTS MEDICAL DISPLAYS  
RUGGED TABLETS  
TURNKEY & DESIGN**

# About Us



For over a decade AGDisplays has been a leading provider of high quality LCD enhancement products and services for the industrial markets. We lead the way in offering an extensive range of custom panel solutions that improve standard display attributes while maximizing performance in any environment. The AGDisplays teams are experts in LCDs, from building simple or complex designs to integration work including ruggedization.

In our 124,000 sq. foot facility, we offer over 800 off the shelf products that include tablets, open and closed frame LCDs and much more. Our knowledge in innovative LCD technology and our high-quality control standards separate us from the rest. At AGDisplays, our teams have a true commitment to becoming your trusted partner.



## OUR SERVICES

- Off The Shelf LCD Products
- NVIS Integration and Design
- OCA, Optical & Bonding Services
- Custom LED Integration & Design
- Touch Screen Integration & Design
- Custom Glass Supply Services
- Turnkey & Design Services
- EMI Shielding & Design

- Film Enhancements & Repolarization
- Certificated FAA Part 145 Repair Station
- Component Assembly & Integration
- LCD Controller, Cabling & Design
- Testing/Certification of EOL Panels
- Drop-in Replacement
- Industrial Repair Program
- Zero Dead Pixel Inspection

# Industries Served



## MILITARY



## AVIONICS



## HOTEL



## MARINE



## MARKETING



## MEDICAL



## RESTAURANT



## RETAIL



## TRANSPORTATION



# Medical



Medical needs call for high contrast, high resolution images in high-ambient-light environments (e.g., operating rooms, intensive care unit, emergency rooms).

AGDisplays offers medical LCD solutions for existing or new display projects. We provide quality solutions that enable extended product performance and lifecycle. We offer a full line of HMI, Radiology and Endoscopy/Surgical displays.

All design solutions are dependent on individual applications and lead to a completely unique technical solution to fulfill customer requirements.

Our team can help you acquire new, EOL or refurbished LCDs, and can customize virtually any panel to meet your specific requirements. From a simple spec enhancement to full solution kitting, AGDisplays handles LCD sourcing, logistics, assembly and repair—all in one place.



## MEDICAL DISPLAYS

Our LCDs support medical applications with long life cycles, high bright display readability and sharp contrast.

## BONDING DESIGNS

Full range of custom OCA, optical or tape bonding for rugged enhancements.

## TURNKEY & DESIGN

Work with our team to create turnkey solutions on new or existing designs.

## TABLETS

AGDisplays makes commercial off the shelf tablets easy to purchase with flexible spec options and easy purchasing.

## RUGGED MOBILE

These devices meet military standards for shock & vibration, limited water submersion and dust ingress.

## EMI SHIELDING & DESIGN

Block electronic interference between LCDs & surrounding equipment with EMI solutions.

## TOUCH DISPLAYS

Our touch panels are eligible for performance upgrades like ruggedization, optical bonds and EMI protection.

## TOUCHSCREEN INTEGRATION

We offer popular technologies like projected capacitive, resistive, surface capacitive, IR, and SAW touch sensors.

## LCD DISPLAYS

Our LCD design solutions maximize standard LCD performance in any environment.

# HMI Display Features\*



- ADJUSTABLE STANDS
- DDC/CI
- DYNAMIC SCALING
- FANLESS DESIGN
- HIGH BIT LUT
- INGRESS PROTECTION
- PROTECTIVE GLASS/ACRYLIC
- TOUCH TECHNOLOGY

*\*Features vary by model*

NOTE: specifications subject to change without notice.

# Featured HMI Display



## AG150XX-CF03N-ONN-V1

15" HMI Display

Display Area	304.1x228.1 HxV mm	Type	TN
Viewing Angle	160°/150°	Operating Temp	10 to 40°C
Brightness	350 nits (typ.)	Storage Temp	-20 to 60°C
Contrast Ratio	800:1 (typ.)	Operating Humidity (RH)	30% to 75%
Resolution	1024x768	Storage Humidity (RH)	10% to 90%
Power Supply	AC 100~240V/DC 12V	Dimensions with stand	347.4x355.7x175 mm
Power Consumption (W)	25 (max)	Dimensions without stand	347.4x271.4x58 mm
Certifications	UL/cUL (60601 Ed4), CB(60601 Ed4), CE, FCC-B, VCCI-B	Dimensions OF, w/o touch	333.4x259.2x51 mm
	Touch Option: Resistive		Touch Option: P-CAP
Touch Point	1	Touch Point	10
Screen Printing	N/A	Screen Printing	Black
Glass Coating	AG	Glass Coating	Clear
Interface	Combo (USB/RS232)	Interface	Combo (USB/RS232)

NOTE: specifications subject to change without notice.

# HMI Displays



**AG170TX-CF02N-ONN-V1**

Display Size	17"
Type	TN
Display Area (HxV)	337.92x270.336 mm
Resolution	1280x1024
Brightness	250 nits (typ.)
Touch Type	None, Resistive or PCAP
Viewing Angle (HxV)	170°/160°
Contrast Ratio	1000:1 (typ.)
Power Consumption	30 W (max)



**AG190TX-CF02N-ONN-V1**

Display Size	19"
Type	TN
Display Area (HxV)	376.32x301.06 mm
Resolution	1280x1024
Brightness	250 nits (typ.)
Touch Type	None, Resistive or PCAP
Viewing Angle (HxV)	170°/160°
Contrast Ratio	1000:1 (typ.)
Power Consumption	30 W (max)



**AG215HX-CF03N-PTM-V1**

Display Size	21.5"
Type	AHVA
Display Area (HxV)	476.06x267.79 mm
Resolution	1920x1080
Brightness	350 nits (typ.)
Touch Type	PCAP
Viewing Angle (HxV)	178°/178°
Contrast Ratio	1000:1 (typ.)
Power Consumption	40 W (max)



**AG238HX-CF02N-PTM-V1**

Display Size	23.8"
Type	AHVA
Display Area (HxV)	527.04 x 296.24 mm
Resolution	1920x1080
Brightness	250 nits (typ.)
Touch Type	PCAP
Viewing Angle (HxV)	178°/178°
Contrast Ratio	1000:1 (typ.)
Power Consumption	40 W (max)

NOTE: specifications subject to change without notice.

# Featured HMI Display



## AG270HX-CF03N-PTG-V1

27" HMI Display

Display Area	597.6x336.1 HxV mm	Type	VA
Viewing Angle	178°/178°	Operating Temp	10 to 40°C
Brightness	300 nits (typ.)	Storage Temp	-20 to 60°C
Contrast Ratio	3000:1 (typ.)	Operating Humidity (RH)	30% to 75%
Resolution	1920x1080	Storage Humidity (RH)	10% to 90%
Power Supply	DC 24V	Dimensions with stand	651 x 441 x 175 mm
Power Consumption	40 W (max)	Dimensions without stand	651 x 402 x 69 mm
Certifications	cTUVus (60601 Ed4), CB(60601 Ed4), CE, FCC-B	VESA Mounting	100x100
Color Depth	8 bit		Touch Type: P-CAP
Gamma LUT	12 bit	Touch Point	10
Speaker	2W Speaker	Screen Printing	Black
IP Rating (front)	IP65	Glass Coating	Clear
IP Rating (back cover)	IPx1	Interface	Combo (USB/RS232)

NOTE: specifications subject to change without notice.



# HMI Displays



Part Number	Size	Resolution	Display Area	Brightness
AG150XX-CF05N-ONU-V1	15"	1024x768	307.1x231.3 mm	250 nits
AG150XX-CF03N-ONN-V1	15"	1024x768	304.1 x 228.1 mm	350 nits
AG170TX-CF02N-ONU-V1	17"	1280x1024	337.92x270.34 mm	250 nits
AG170TX-CF02N-ONN-V1	17"	1280x1024	337.2x270.34 mm	250 nits
AG185ZX-CF03N-ONU-V1	18.5"	1366x768	409.8x230.4 mm	300 nits
AG190TX-CF02N-ONU-V1	19"	1280x1024	376.32x301.06 mm	250 nits
AG190TX-CF02N-ONN-V1	19"	1280x1024	376.32x301.06 mm	250 nits
AG215HX-CF03N-PTM-V1	21.5"	1920x1080	476.06x267.79 mm	350 nits
AG215HX-CF03N-ONU-V1	21.5"	1920x1080	476.64x268.11 mm	300 nits
AG238HX-CF02N-PTM-V1	23.8"	1920x1080	527.04x296.24 mm	250 nits
AG240HX-CF03N-OUT-V1	24"	1920x1080	531.36x298.89 mm	300 nits
AG269HX-CF03N-ONU-V1	26.96"	1920x1080	597.6x336.15 mm	300 nits
AG270HX-CF03N-PTG-V1	27"	1920x1080	597.6x336.1 mm	300 nits



NOTE: specifications subject to change without notice.

# Radiology Display Features\*



- ADJUSTABLE STANDS**
- AMBIENT SENSOR**
- AUTO LUMINANCE STABILIZER**
- COLOR TRACKING**
- DDC/CI**
- DYNAMIC SCALING**
- FANLESS**
- FRONT SENSOR**
- FULL HD/4K2K**
- HARDWARE CALIBRATION**
- HIGH BIT LUT**
- SELF CALIBRATION**
- UNIFORMITY COMPENSATION**
- USER PRESETS**

*\*Features vary by model*

NOTE: specifications subject to change without notice.

# Radiology Displays



Part Number	Size	Resolution	Display Area	Brightness
AC190TX-CF14M-NNU-V1	19"	1280x1024	376.32x301.06 mm	1400 nits
AC190TX-CF03N-NNU-V1	19"	1280x1024	376.32x301.06 mm	330 nits
AG201UX-CF10M-NNU-V1	20.1"	1600x1200	408x306 mm	1000 nits
AC213MX-CF17M-NNU-V1	21.3"	2048x1536	431.62x323.71 mm	1700 nits
AC2130X-CF12M-NNU-V1	21.3"	2560x2048	422.4x337.9 mm	1200 nits
AG213UX-CF04N-NNU-V1	21.3"	1600x1200	432x324 mm	440 nits
AC213MX-CF10N-NNU-V1	21.3"	2048x1536	431.15x324.86 mm	1000 nits
AC300KX-CF09N-NNU-V1	30"	3280x2048	645.5x403.05 mm	900 nits



NOTE: specifications subject to change without notice.

# Endoscopy/Surgical Features\*



**ACCESSORY POWER**  
**AR PROTECTIVE GLASS/ACRYLIC**  
**AUTO LUMINANCE STABILIZER**  
**COLOR TRACKING**  
**COVER GUARD**  
**DDC/CI**  
**DYNAMIC SCALING**  
**FANLESS DESIGN**  
**FRONT SENSOR**  
**FULL HD/4K2K**  
**HARDWARE CALIBRATION**  
**HIGH BIT LUT**  
**INGRESS PROTECTION**  
**SELF CALIBRATION**  
**SERIAL RS232 REMOTE CONTROL**  
**UNIFORMITY COMPENSATION**  
**UNIVERSAL CONNECTIVITY**  
**USER PRESETS**

*\*Features vary by model*

NOTE: specifications subject to change without notice.

# Featured Surgical Display



## AG400KX-CF05N-NNU-V2

40" Ultra HD (4K) Endoscopy and Surgical Display

Type	MVA
Resolution	3840x2160
Screen Size	40"
Display Area	878.112(H)x485.352(V) mm
Pixel Pitch	0.2286(H)x0.2247(V) mm
Viewing Angle	178°/178°
Response Time	8.5 ms (G to G)
Brightness	550 nits (typ)
Contrast Ratio	4800:1 (typ)
Color Gamut (%)	NTSC 88%
Color Depth	8 bit + FRC
Power Supply	AC
Power Consumption	120 W (max)

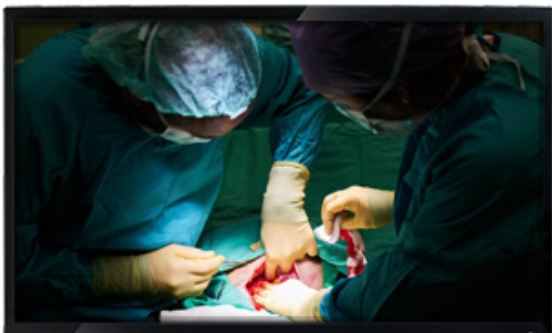
Dimensions	933.7x570.7x104 (w/o stand) mm
VESA Mounting	200x200 mm
Weight	26.2 (w/o stand) Kg
ID Color	Black
Screen Protection	Glass
Surface Coating	AR
IP Rating (front)	IPx5
IP Rating (back)	N/A
Operating Temp	5 to 35°C
Storage Temp	-20 to 60°C
Operating Humidity	30% to 75%
Storage Humidity	10% to 90%
Certifications and Compliances	cTUVus (60601 Ed4), CB (60601 Ed4), CB (60950 Ed4), CE, FCC-B, VCCI-B, CCC, BSMI

NOTE: specifications subject to change without notice.

# Endoscopy/Surgical



Part Number	Size	Resolution	Display Area	Brightness
AG190TX-CF06N-NNM-V1	19"	1280x1024	373.32x301.056 mm	600 nits
AG240IX-CF03N-NNM-V1	24"	1920x1200	518.4x324 mm	350 nits
AG260HX-CF04N-NNM-V1	26"	1920x1080	573x324 mm	450 nits
AG315KX-CF03N-NNA-V1	31.5"	4096x2160	697.96x368.06 mm	350 nits
AG400KX-CF05N-NNU-V1	40"	3840x2160	878.11x485.35 mm	550 nits
AG400KX-CF05N-NNU-V2	40"	3840x2160	878.112x485.352 mm	550 nits
AG420HX-CF07N-NNA-V1	42"	1920x1080	930.24x523.26 mm	700 nits
AG550HX-CF05N-NNA-V1	55"	1920x1080	1209.6x680.4 mm	500 nits
AG580KX-CF07N-NNU-V1	58"	3840x2160	1270.08x721.44 mm	700 nits



NOTE: specifications subject to change without notice.

THANK YOU

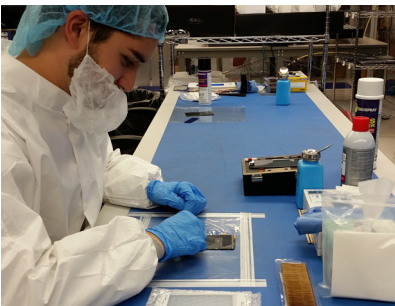
# Thank You

|||||

## COMMUNITY OF EXPERTS

Whether we are met with a new design or challenged with improving an existing design, AGDisplays supports your team by delivering unparalleled LCD expertise and technology. AGDisplays' partners benefit from our efficient design process and our dedication to creating quality design solutions.

We saw the need for off the shelf products, so we've added an expansive line of open/closed frame LCDs, digital signage, and all-in-one products. We offer unique LCD products like advanced touchscreen tabletops, high quality medical displays and rugged mobile devices. All of which can benefit from our value add integration services. Our products are used across many industries including Military, Avionics, Marine, Industrial, Medical, Transportation and many more.



## CERTIFICATIONS

AGDisplays values high-quality working and design standards. We support your teams with the knowledge & expertise needed to make strategic design and manufacturing decisions.



CERTIFICATED PART 145  
REPAIR STATION



AGDISPLAYS IS  
ISO 14001, 45001 & R2  
CERTIFIED

## CONTACT US

### HEADQUARTERS

AGDisplays, a dba of AssetGenie, Inc.  
220 Huff Ave, Suite 400  
Greensburg, PA 15601

### CONTACT BY PHONE

Toll Free: 844-841-6851  
Office: 724-552-4904  
Fax: 724-552-4905

### CONTACT BY EMAIL

[sales@agdisplays.com](mailto:sales@agdisplays.com)  
[info@agdisplays.com](mailto:info@agdisplays.com)  
[support@agdisplays.com](mailto:support@agdisplays.com)

### GET CONNECTED WITH AGDISPLAYS

Join our social community to stay in touch with all of our latest news, events and promotions.

