



220 Huff Ave, Suite 400  
Greensburg, PA 15601



PH: (724) 552-4904  
F: (724) 552-4905



sales@agdisplays.com  
agdisplays.com



Advanced LCD Solutions Specialist

# EMI SHIELDING DESIGN

EMI MESH  
EMI FILM

# About Us



For over a decade AGDisplays has been a leading provider of high quality LCD enhancement products and services for the industrial markets. We lead the way in offering an extensive range of custom panel solutions that improve standard display attributes while maximizing performance in any environment. The AGDisplays teams are experts in LCDs, from building simple or complex designs to integration work.

In our 124,000 sq. foot facility, we offer over 800 off the shelf products that include tablets, open and closed frame LCDs and much more. Our knowledge in innovative LCD technology and our high-quality control standards separate us from the rest. At AGDisplays, our teams have a true commitment to being your trusted partner.



## OUR SERVICES

- Off The Shelf LCD Products
- NVIS Integration and Design
- OCA, Optical & Bonding Services
- Custom LED Integration & Design
- Touch Screen Integration & Design
- Custom Glass Supply Services
- Turnkey & Design Services
- EMI Shielding & Design

- Film Enhancements & Repolarization
- Certificated FAA Part 145 Repair Station
- Component Assembly & Integration
- LCD Controller, Cabling & Design
- Testing/Certification of EOL Panels
- Drop-in Replacement
- Industrial Repair Program
- Zero Dead Pixel Inspection



# Industries Served



## MILITARY



## AVIONICS



## HOTEL



## MARINE



## MARKETING



## MEDICAL



## RESTAURANT



## RETAIL



## TRANSPORTATION



# EMI Shielding



EMI film provides the “immunity” for electronic components that are susceptible to EMI (electromagnetic interference). Our solution options offer maximized optical performance and makes display/touch screen RFI compliant.

EMI film or mesh solutions integrate quick and easy, requiring no redesign and allowing for fast production. Our service installs new EMI shielding, or replaces existing EMI system. While our transparent film and mesh solutions are our most popular solutions, AGDisplays also offers other EMI options to meet your design requirements.

Transparent thin-film conductive coatings provide LCD technology with great optical and EMI shielding properties. Typically the frequency level ranges in 100 kHz - 20 GHz. Films may be offered with conductivity ranging from 1 to 100  $\Omega$ /sq.

Conductive grid mesh solutions provide panels with a high level of protection. A fine-conductive grid may be built of woven stainless-steel or copper mesh, or alternatively made with a patterned conductive metal coating on the substrate's surface.

## EMI MESH SOLUTIONS

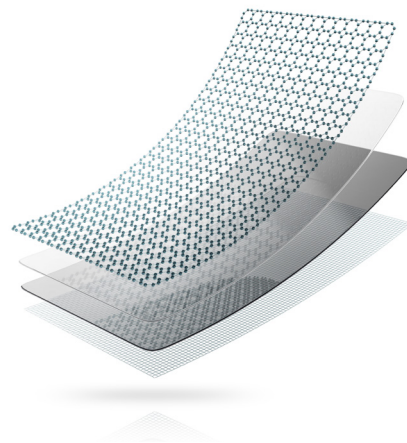
- Woven wire mesh
- Robust active enhancement, providing high level of protection
- Compatible for use with a touch sensor
- Photopic transmission at  $\geq 85\%$
- Diffuse reflectance at  $30^\circ$  at  $\leq 0.14\%$
- Specular reflectance at  $30^\circ$  at  $\leq 1.2\%$
- $\leq 0.25 \Omega$ /sq. surface resistance
- Shielding effectiveness:
  - 50 Mhz (megahertz):  $\sim 75$  dB
  - 100 Mhz:  $\sim 65$  dB

## EMI FILM SOLUTIONS

- For panels needing low attenuation (10-20 dB)
- Cost effective solution, passive enhancement
- Compatible for use with a touch sensor
- High visible transmission with low electrical resistance:
  - 10 ohms/sq.
  - 20 ohms/sq.
- Reduces problematic EMI and/or IR emissions from surface
- Superior to ITO films at low resistance for transparency & mechanical properties

## BENEFITS

- Passive Integration Solution
- Compatible with Touch Sensors
- High Visible Transmission
- Reduces EMI/IR Surface Emissions
- Superior to ITO Films
- Several Custom Design Options



THANK YOU

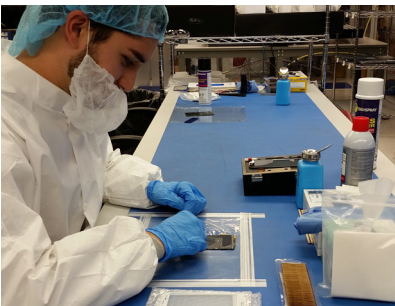
# Thank You



## COMMUNITY OF EXPERTS

Whether we are met with a new design or challenged with improving an existing design, AGDisplays supports your team by delivering unparalleled LCD expertise and technology. AGDisplays' partners benefit from our efficient design process and our dedication to creating quality design solutions.

We saw the need for off the shelf products, so we've added an expansive line of open/closed frame LCDs, digital signage, and all-in-one products. We offer unique LCD products like advanced touchscreen tabletops, high quality medical displays and rugged mobile devices. All of which can benefit from our value add integration services. Our products are used across many industries including Military, Avionics, Marine, Industrial, Medical, Transportation and many more.



## CERTIFICATIONS

AGDisplays values high-quality working and design standards. We support your teams with the knowledge & expertise needed to make strategic design and manufacturing decisions.



CERTIFICATED PART 145  
REPAIR STATION



AGDISPLAYS IS  
ISO 14001, 45001 & R2  
CERTIFIED

## CONTACT US

### HEADQUARTERS

AGDisplays, a dba of AssetGenie, Inc.  
220 Huff Ave, Suite 400  
Greensburg, PA 15601

### CONTACT BY PHONE

Toll Free: 844-841-6851  
Office: 724-552-4904  
Fax: 724-552-4905

### CONTACT BY EMAIL

[sales@agdisplays.com](mailto:sales@agdisplays.com)  
[info@agdisplays.com](mailto:info@agdisplays.com)  
[support@agdisplays.com](mailto:support@agdisplays.com)

### GET CONNECTED WITH AGDISPLAYS

Join our social community to stay in touch with all of our latest news, events and promotions.

